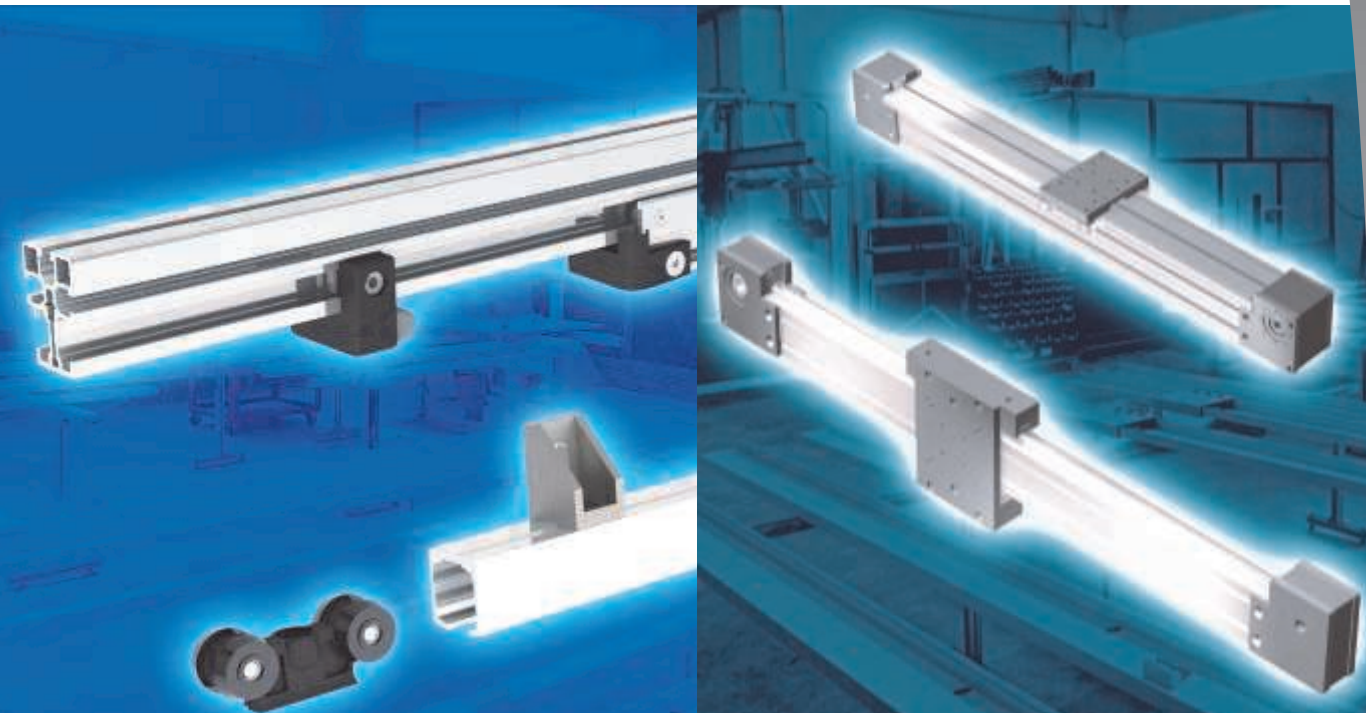




*exclusive Australian suppliers of*

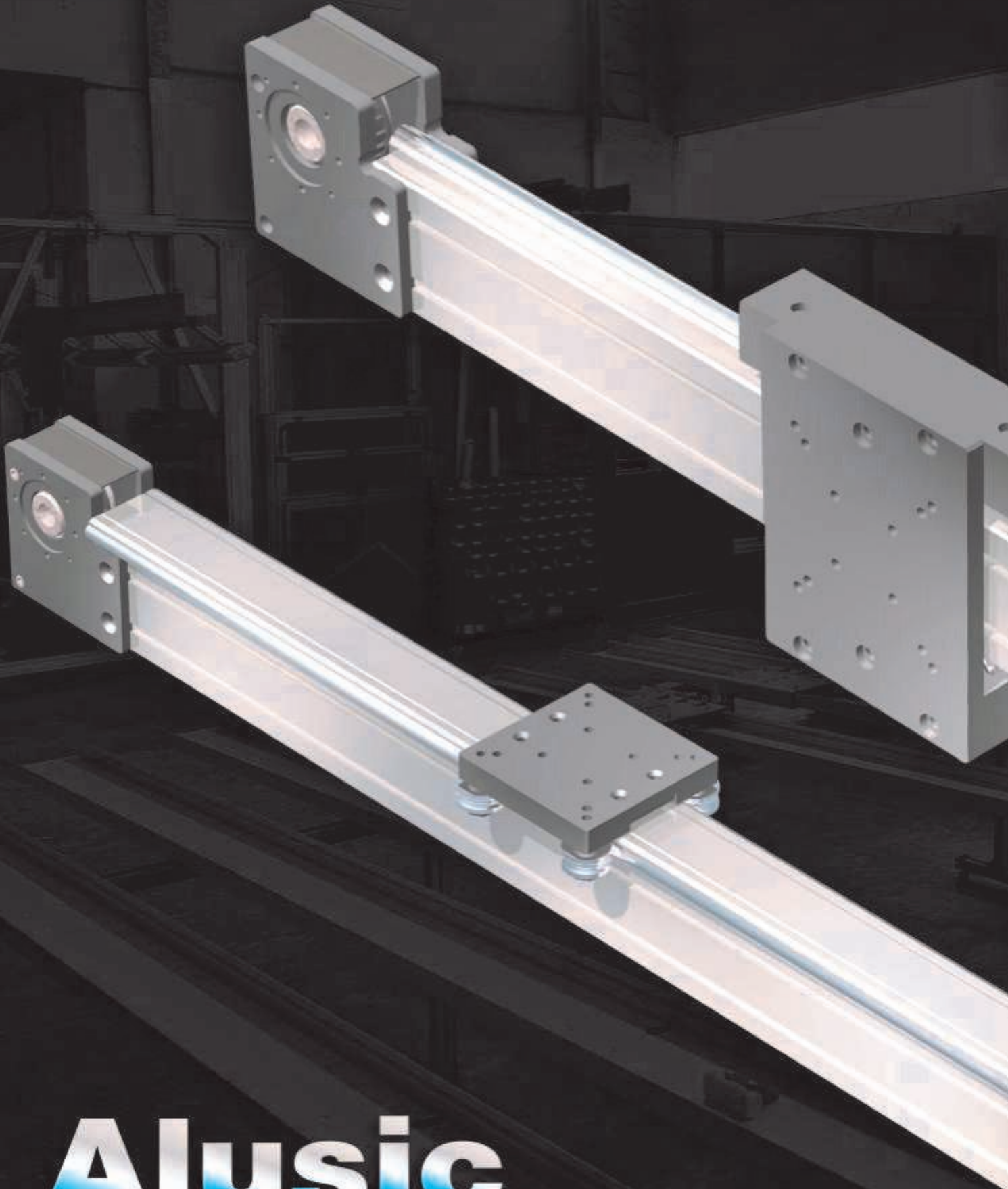
**Alusic®**



Linear Guides and Actuators

[aluminiumprofile.com.au](http://aluminiumprofile.com.au)

# *LINEAR GUIDES*

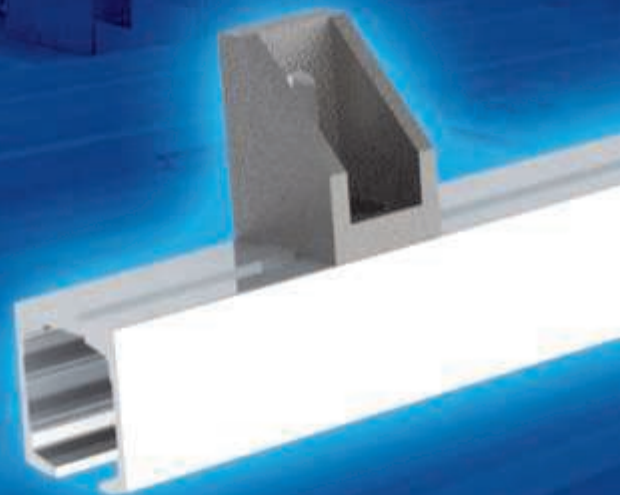




# ***SERVO DRIVEN ACTUATORS***

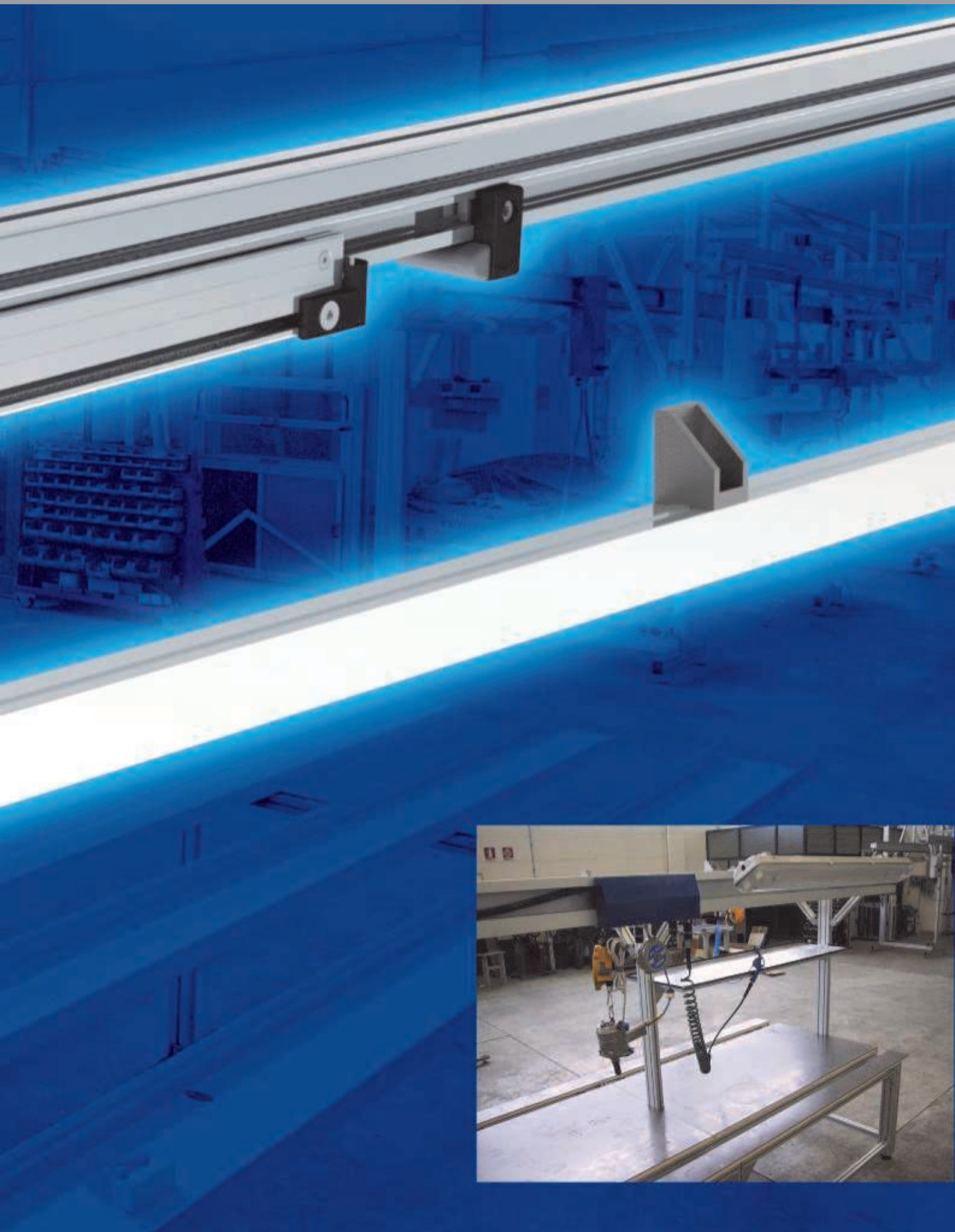


# LINEAR SYSTEMS

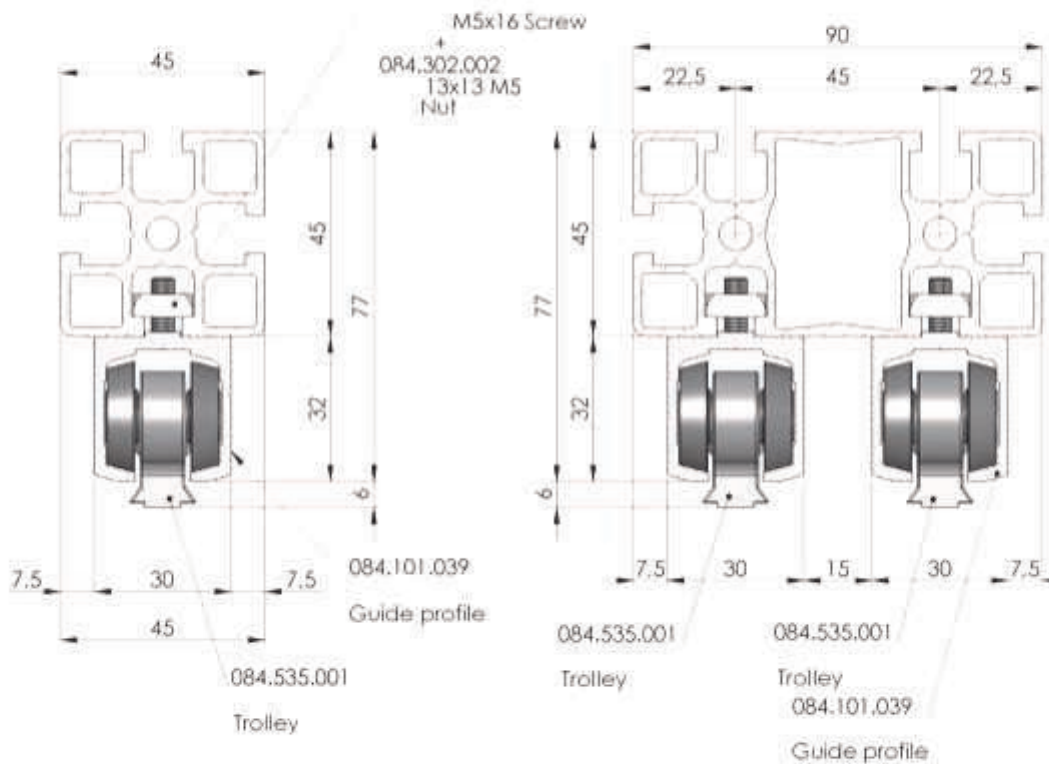
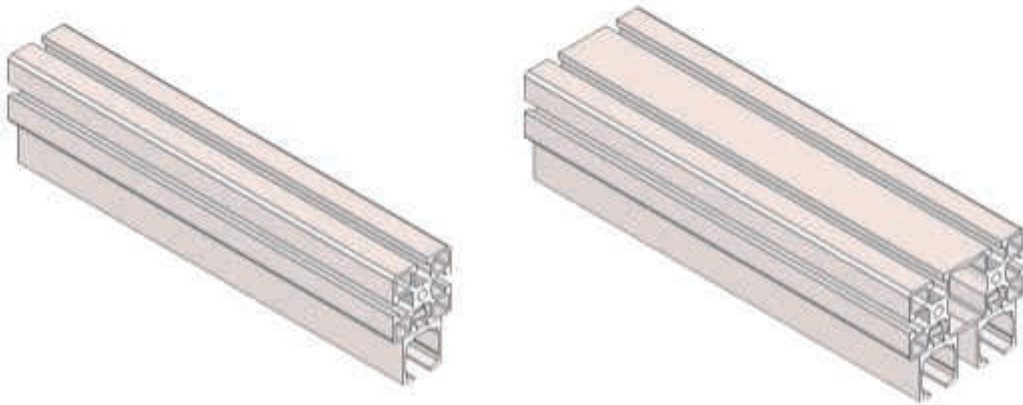


**A|usic**





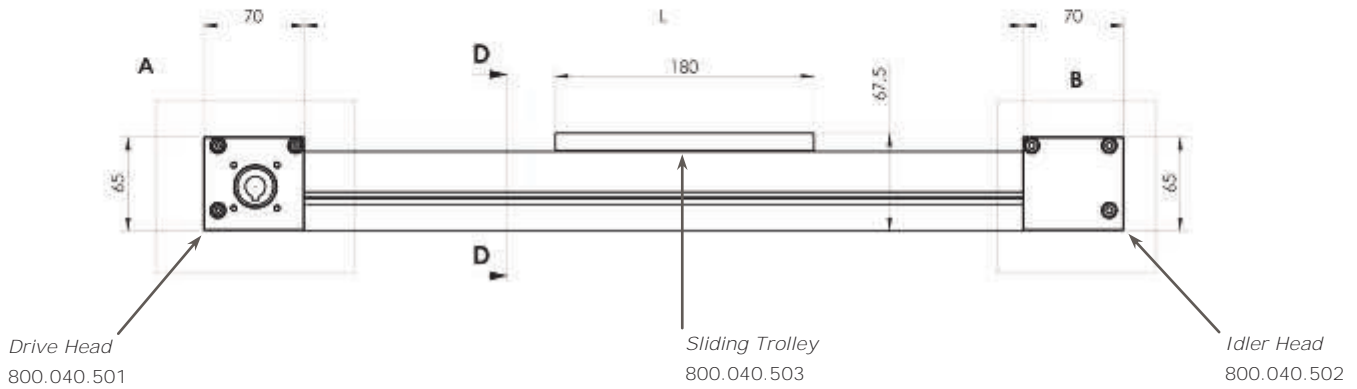
# Linear Guide Assembly Examples



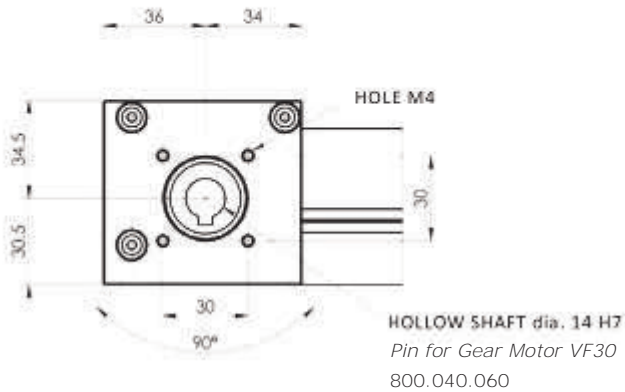
## 800.055 Series

# 55x55 Linear Guide Assembly Reference Drawing

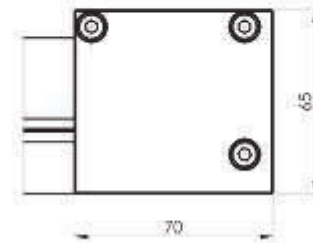
The drawings here below illustrate the dimensions of the Linear Guide of the Series 800.055 with Alusic 800.040.021 profile structure and hardened steel rails  $\varnothing 6$



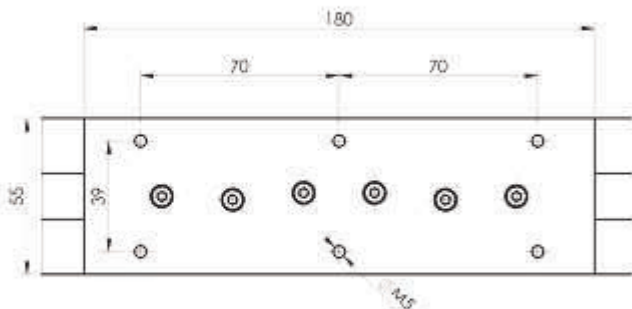
**RUN OF THE MOVABLE TROLLEY = L - 180**  
 L = aluminium profile length with guides  $\varnothing 6$



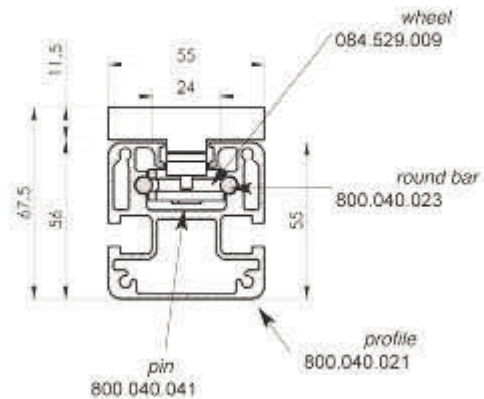
Detail A for gear motors BRUSHLESS



Detail B: idler head with sliding stretching system for gear motors BRUSHLESS



Detail of movable trolley  
 Sliding Trolley  
 800.040.503

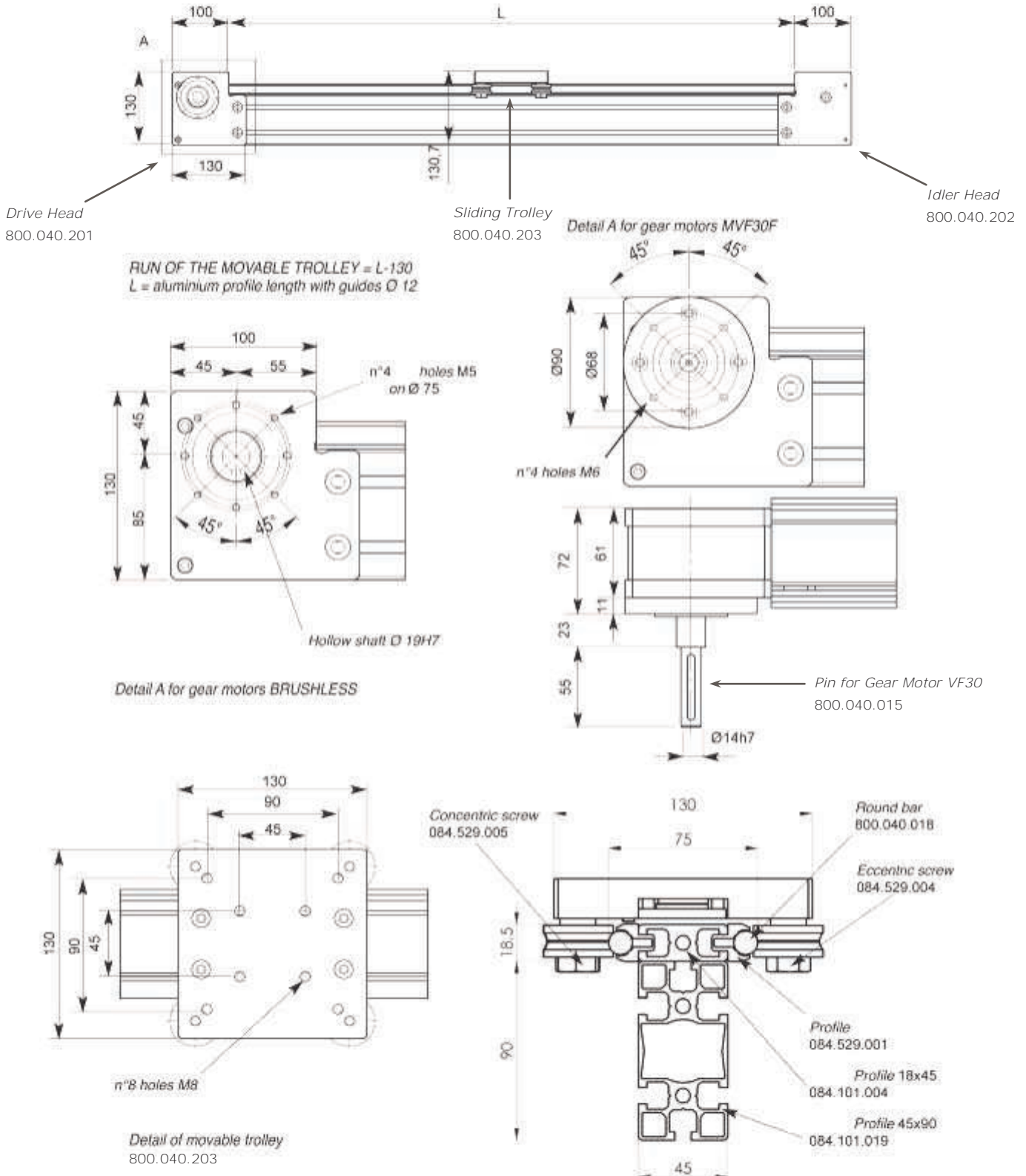




# 800.010 Series

## 45x90 Linear Guide Assembly Reference Drawing

The drawings here below illustrate the dimensions of the Linear Guide of the Series 800.010 with Alusic 45x90 profile structure and hardened steel rails  $\varnothing 12$

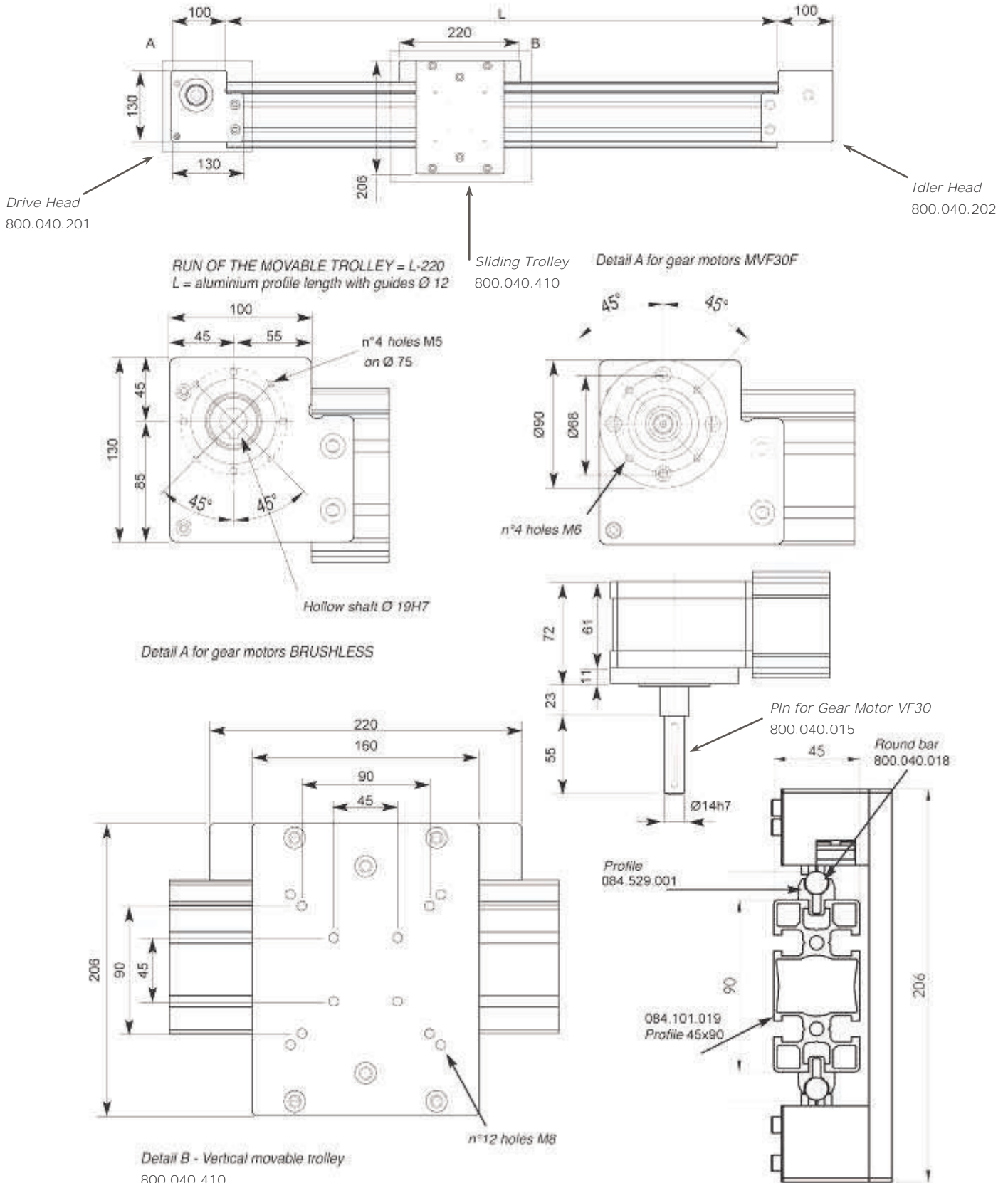




800.030 Series

45x90 Vertical Linear Guide Assembly Reference Drawing

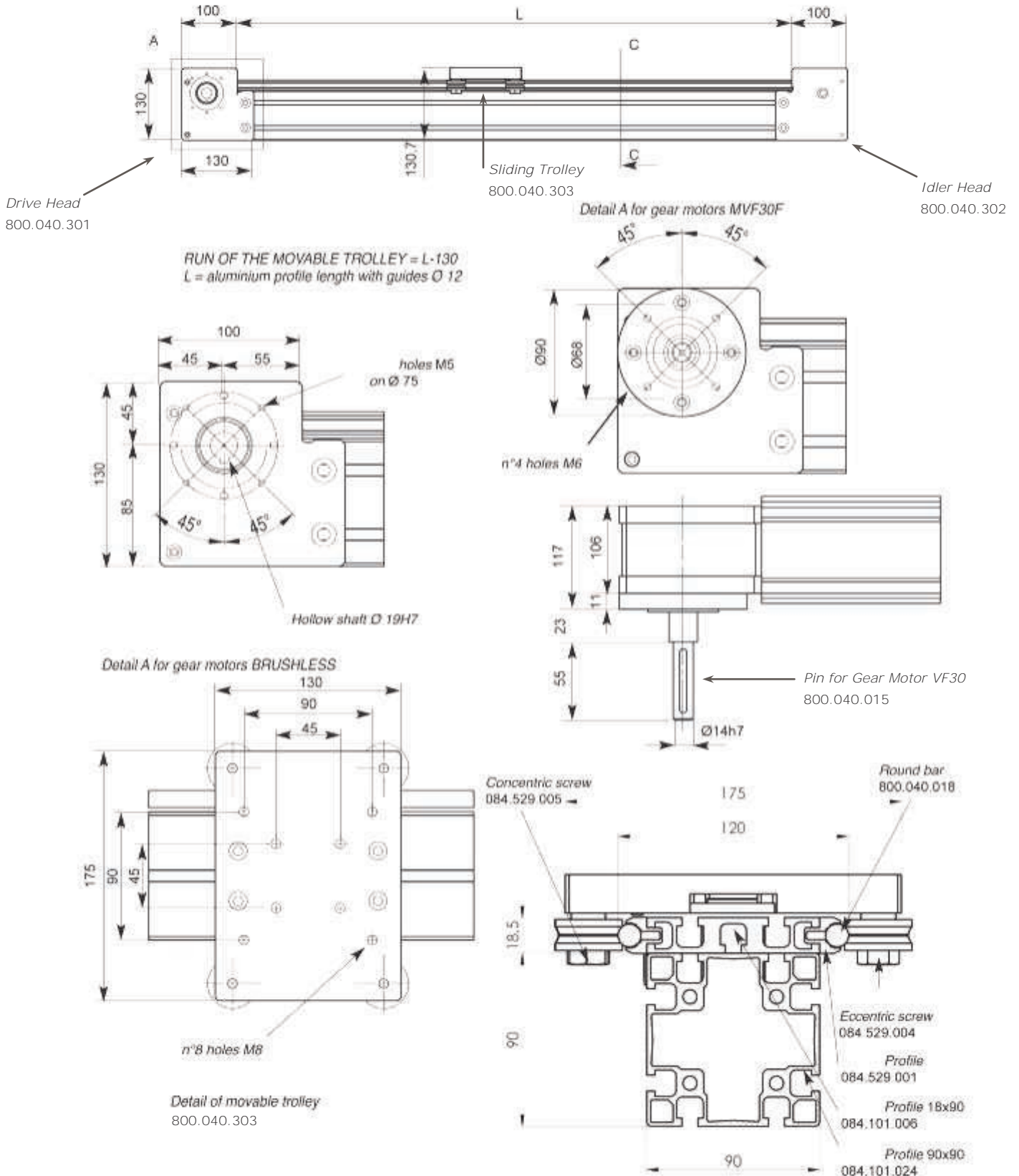
The drawings here below illustrate the dimensions of the Linear Guide of the Series 800.030 with Alusic 45x90 profile structure and hardened steel rails  $\varnothing 12$



# 800.020 Series

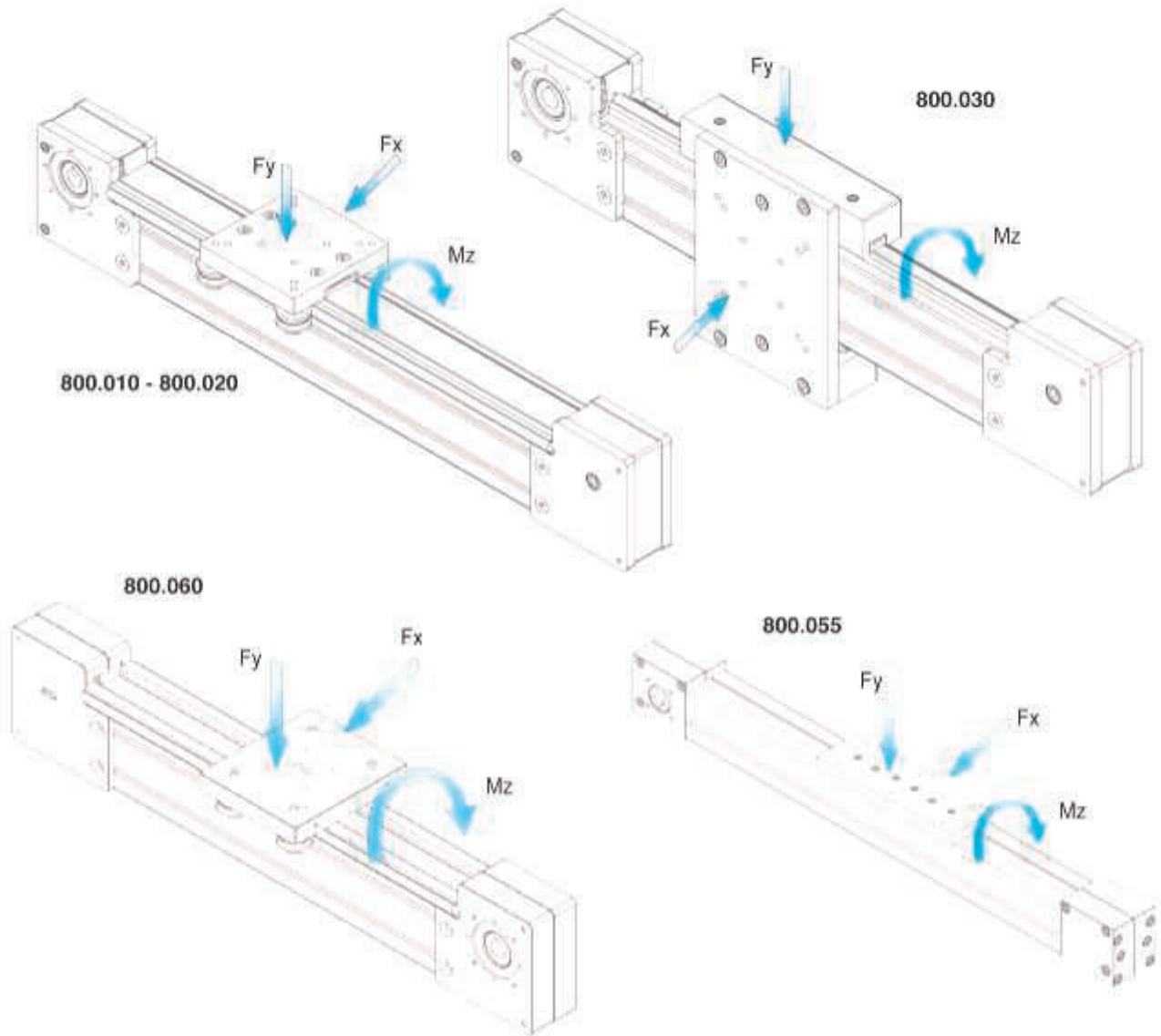
## 90x90 Vertical Linear Guide Assembly Reference Drawing

The drawings here below illustrate the dimensions of the Linear Guide of the Series 800.020 with Alusic 95x90 profile structure and hardened steel rails  $\varnothing 12$



## Maximum Load Calculations

The table here below shows the maximum weights  $F_x$ ,  $F_y$  (N) and  $M_z$  (Nm) the movable trolley can move:



CODICE CODE	CARICO $F_x$ (N) FORCE $F_x$ (N)	CARICO $F_y$ (N) FORCE $F_y$ (N)	MOMENTO $M_z$ (Nm) MOMENT $M_z$ (Nm)	CARICO Max su cinghia (N) Max BELT LOAD (N)
800.055	650	900	30	1.200
800.010	1.500	1.700	30	2.000
800.020	2.000	2.500	40	3.000
800.030	1.500	1.700	35	2.000
800.060	1.500	1.700	30	3.000

The maximum speed of carriage at maximum load is 1 m/s. Load conditions must be evaluate depending on the application.

To calculate the load of the aluminium profiles consult the catalogue Alusic



ALUMINIUM PROFILE  
PROFILE ACCESSORIES  
WORKSTATIONS & BENCHES  
LINEAR GUIDES  
CONVEYORS  
MACHINE GUARDS & FENCING  
MACHINERY FRAMES  
ENCLOSURES  
CARTON / PRODUCT ELEVATORS  
DISPLAY UNITS  
CLEAN ROOMS  
EXHIBITION STANDS  
CNC ROUTER BEDS  
VEHICLE CUSTOMISATIONS  
DESIGN CONSULTANCY  
DEVELOPMENT & PROTOTYPING



A company owned and operated by Australis Engineering Pty Ltd

Web: [www.aluminiumprofile.com.au](http://www.aluminiumprofile.com.au)

Email: [sales@aluminiumprofile.com.au](mailto:sales@aluminiumprofile.com.au)

Address: 25 Harley Crescent  
Condell Park NSW 2200

Telephone: +61 2 9707 5800

Fax: +61 2 9708 3564

Local stockists:

VIC and SA: *Eljay Engineering Pty Ltd*  
Phone: +61 3 9738 2388  
Mobile: 0438 554 899  
Email: [profilium@eljay.com.au](mailto:profilium@eljay.com.au)  
Address: 2/19 Edelmaier St  
Bayswater VIC 3153

QLD: *Gap Engineering Pty Ltd*  
Phone: +61 7 3823 1079  
Mobile: 0400 032 616  
Email: [greg@gapengineering.com.au](mailto:greg@gapengineering.com.au)  
Address: 2863 Old Cleveland Rd  
Chandler QLD 4155