



**T-Slot Aluminium Profile,  
Industrial Automation,  
Assembly Systems and  
Components**

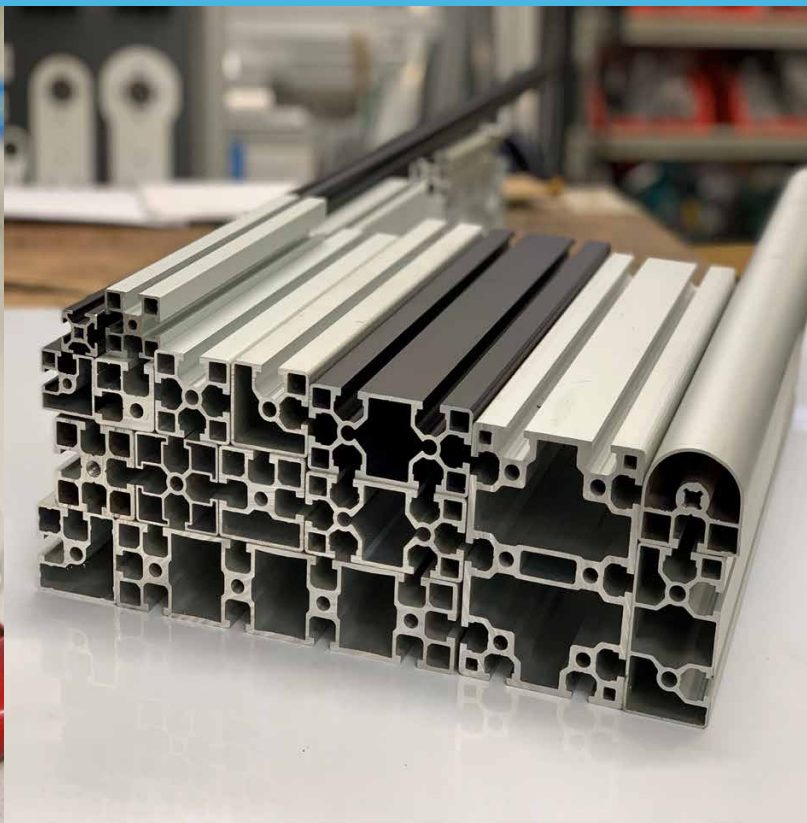
---



**Alusic**

Australian distributor of Alusic aluminium profiles

[aluminiumprofile.com.au](http://aluminiumprofile.com.au)



# T-Slot Aluminium Profile and Accessories

Profilium are the exclusive Australian partner of Alusic SRL - the manufacturers of our aluminium t-slot profile and accessories and linear guides and actuators.

Alusic are located in Mondovi in northern Italy and have been manufacturing t-slot profiles since 1985. Alusic export their profile to over 40 countries across Europe and the world.

With a strong emphasis on R&D, Alusic are constantly innovating and growing their profile solutions and their business systems to ensure they remain at the forefront of t-slot profile and automation solutions.

Alusic are ISO 9001 certified and have also achieved the mandatory EN 1090 standard covering suppliers of structural materials, which is required under European law. This means that Alusic profiles can carry the CE mark which ensures safety and quality.

[aluminiumprofile.com.au](http://aluminiumprofile.com.au)



# Alusic

## B2B and B2C Customers

If you are a B2B customer, whether you are an OEM, integrator or end-user, Profilium offers a huge range of profiles and accessories. If we don't currently stock it in Australia, we can source the item on our next scheduled shipment. Or for urgent requirements we can even arrange air-freight deliveries.

For approved B2B customers, we offer 30-day trading terms to assist with your project cash flow. Minimum order values apply.

B2B customers purchasing large volumes of profile as either a single order or as a large cumulative annual purchase may even qualify for a discount.

For B2C customers, there is no minimum spend required. Simply place your order online at our web shop.



## 60+ Profiles stocked in Australia

Profilium have been importing and distributing Alusic profiles since 2010.

We stocks over 60 types of Alusic profile in Australia, plus we locally stock an extensive range of accessories to utilise with the profile. We also offer a range of Alusic's linear guides and linear actuator systems.

### Online ordering

Ordering your profile could not be easier. Profilium's website has an online shop where you can:

- See local pricing and local stock availability
- See technical specifications
- Create your own quote
- Place an order
- Pay for your order
- Pick-up your order or we can ship the order to you



Scan the QR code for instant pricing with our online Web Shop and Quote Tool

## Local stock in Sydney, Melbourne and Brisbane

We carry an extensive range of local stock, with outlets in Sydney, Melbourne and Brisbane. Our typical stock of profiles include...

### Profiles with a 6mm slot:

- 20x20 and 20x40 (silver and black anodised)
- 30x30, 30x60 including 1, 2, 3 and 4 slot (silver, some black)

### Profiles with an 8mm slot:

- 30x30, 30x60 including 1, 2, 3 and 4 slot (silver)
- 40x40 and 40x80 including 1, 2, 3 and 4 slot (silver and some black)
- 40x120, 80x80 and 80x120 (silver)
- 18.5x45, 18.5x90 and 32x32 including various slot types (silver)
- 45x45, 45x60 and 45x90 including 1, 2, 3, and 4 slot (silver)
- 45x120, 45x130 and 45x180 (silver)
- 90x90, 90x180 (silver)
- Light, Slim, Regular and Heavy duty variants
- Half-round, Round, 45° angled and Telescoping
- Cable holding profile

We also stock a huge range of complimentary accessories for use with the profile.





## Conveyors

Profilium can design and manufacture a range of conveyors that are customised for each client, product and application. Our conveyors are made to order ensuring they are fit for purpose each and every time. Aluminium profile conveyors are available as:

- Belt conveyors
- Slat conveyors
- Modular belt conveyors
- Light duty pallet conveyors

## Custom Workstations

Need an industrial or clean room workstation? We offer fully customised, built to order workstations for product assembly or testing, servicing, pick & pack or other specialised requirements. We offer fully hygienic or anti-static workstations for medtech, electrical or pharmaceutical applications. Workstation options include:

- Height adjustable
- Integrated power, data or compressed air
- Monitor and keyboard mounts
- Integrated Lighting
- Shelves, drawers, parts bins/ totes
- Anti-static or hygienic bench tops
- Ergonomic design
- Integrated conveyors, linear systems or hydraulics



## Automation & Robotics

T-slot profile is an ideal material for using with robotics and automation systems. It is fast to assemble, lightweight and easily adaptable.

Applications include:

- Linear systems and linear actuators
- Robot end-effectors
- Cobot bases
- Vision system, sensor and automation mounts

## Carbon Fibre profile

CarboSix has been developed by Alusic as the world's only module profile in carbon fibre. The flexural mechanical properties of carbon fibre profiles offer significant advantages to the automation and industrial manufacturing industries compared to regular aluminium profile because of carbon fibre's unique features. Perfect for:

- Robot end-effectors
- Packaging applications
- Low inertia applications







## Machine Guarding

Profilium can design, manufacture and install custom machine guards for new or existing equipment. Using our 3D CAD software, our team of engineers can design a machine guard to suit your specific machinery that:

- Complies with Australian Workplace Health and Safety regulations and Design standards
- Is user friendly, being easy to clean and access the machines for maintenance
- Is efficient and safe for your personnel to use – both from the machine itself and operation of the guarding
- Provide options for complete enclosure of the equipment to eliminate product contamination

## Frames

Aluminium profile is ideal for frame builds to support and house equipment of all types. With the option of “closed face” profiles or multi-slot profiles, you can pick the right style and size of profile to suit the aesthetic and load requirements of your machinery.

- |                         |                                  |
|-------------------------|----------------------------------|
| ■ Robotics & Automation | ■ Vending Machines               |
| ■ AGV frames            | ■ Sorting Machines               |
| ■ Industrial labelers   | ■ Bagging Machines               |
| ■ Vision Systems        | ■ Special Purpose Vehicle frames |
| ■ 3D Printers           | ■ Trade stands                   |
| ■ CNC Machines          |                                  |

## Trolleys and Jigs

T-slot profile is lightweight and easy to handle. It doesn't need welding which means your structure won't distort and be out of square. T-slot profile is used extensively in the European automotive, aerospace and general manufacturing industries

Applications include:

- Assembly jigs and frames
- Parts picking trolleys frames
- Aerospace assembly
- Industrial air-conditioning, motor and drives and water pump assembly
- Furniture assembly

## Displays and AV Systems

Profile is frequently used for professional Display Units, and Audio Visual systems. The slots allow for infinite adjustment and full customisation.

Applications include:

- Light boxes
- TV Walls
- General signage
- AV Frames
- Scanning systems
- 3D Camera scanning systems

# Web Shop - Online Quotes and Orders

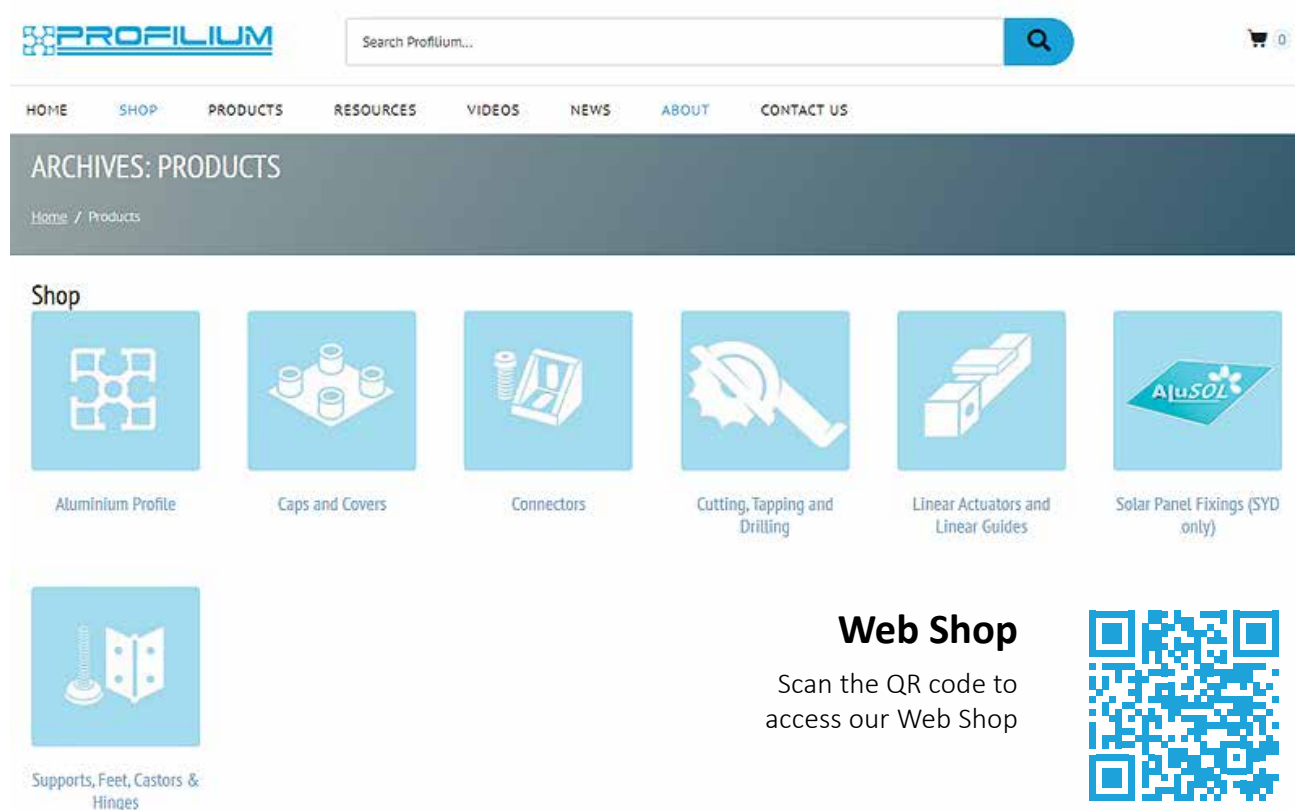
## No waiting - create an Online Quote

Profilium provides a DIY Online Quote Module that allows you to configure all of the t-slot profiles, accessories or linear automation components that you need for your project or job. The Quote Module is built into the Web Shop, meaning your pricing is always up to date and you don't need to wait for our staff to prepare and email you a quote.

Once you have add all of the items and adjusted the quantities, simply fill out your name and email address and a PDF quote will be instantly emailed to you. Our PDF quotes include our logo, business details, a date and a quote reference number, as well as an itemised list of all of the materials or services you included in your quote. Our PDF quote is suitable to provide to your accounts payable or procurement team for order approval.

## Online Ordering

Once you have completed your quote and received your initial quote email, a second email will arrive in your inbox with a link allow you to "accept" or "reject" the quote. If you accept the quote, you will be taken back to our web shop where you can complete the online check-out. Note, once back in the web shop you can also add-to or modify your cart.



## See the price! See stock availability! Order and Pay Online!

If you know what you need simply go straight to our web shop and place your order online.

- T-slot profile, accessories and linear automation products are shown in the web shop
- See local pricing and local Australian stock availability
- View product technical information, dimensions and weights.
- Watch videos to see Profile connection methods - includes a parts list at the end of each video.
- We can Cut, Drill or Tap the Profile to your specifications. These services are chargeable and can be added to your Shopping Cart at the web shop
- Pay online using a credit card or check-out and receive our bank details for EFT payment.
- Collect your order at our Sydney, Brisbane or Melbourne warehouses, or we can organise to freight your order.

### We can cut your profile

Want to start building your structure as soon as possible? Profilium can cut the profile to suit your dimensions. Cutting also reduces the cost of freight in most cases.

Our high speed, dedicated aluminium saw has a laser cutting guide that can be set to  $\pm 0.5$  mm accuracy for accurate, straight and clean cuts to the profile ends. We can offer straight or mitre style cuts.

When determining cutting requirements, remember that each cut will consume around 5mm of profile (the width of the saw blade) and make sure to allow for this in your cutting calculations.

Each cut is charged at \$3.00\* +GST and the total number of cuts must be added to your shopping cart prior to check-out.

### Cutting instructions

There are three ways to send us your cutting instructions.

1. For simple instructions, just add the dimensions in the *Comments field* at the shopping cart check-out page
2. Use our *Cutting Worksheet*- available on each profile product page or from the Resources tab. Simply fill out your instructions and email the sheet to us.
3. Provide a *CAD drawing* with dimensions and number of cuts shown for each profile.



### We can drill or tap your profile

In addition to cutting your profile we can also drill any pilot holes or perform the end-tap to more quickly allow for assembly of your structure.

Each drill or tap is charged at \$3.00\* +GST and the total number of drilling or tapping actions must be added to your shopping cart prior to check-out.

### Drilling and Tapping instructions

To provide your Drilling and Tapping instructions, please provide a CAD drawing with dimensions and clearly marked locations and comments for each drill or tap, including the diameter (mm) that you require for each action.



### Cut, Drill and Tap

Scan the QR code to access our Cutting, Drilling and Tapping service.



\* Profilium's prices correct as of 1 March 2022. Prices subject to change without notice.



## Structural Profiles

Alusic is ISO 9001:2008 and EN1090 certified: these strict certifications are testament to Alusic's continuous commitment to guaranteeing customers the highest standards of quality.

All Alusic profiles are extruded from EN-AW 6060 (Al Mg Si 0.5) primary aluminium alloy. A special request for EN-AW 6063 primary aluminium alloy is available - please check for lead times.

The aluminium used for Alusic profiles is supplied as T5/T6 temper (cooled from hot working/solution heat treated and artificially aged). The bars are normally supplied with a 12 µm anodising treatment (on request, most profiles can also be supplied as mill finish). The tolerances applied when extruding the profiles follow EN 12020-2.

## Profile Composition

The following table shows the Chemical Composition of the Aluminium alloys used in the profile:

En-AW	6060	6063
<b>Cu</b>	0.10	0.10
<b>Fe</b>	0.1 - 0.3	0.35
<b>Mn</b>	0.10	0.10
<b>Mg</b>	0.35 - 0.6	0.45 - 0.9
<b>Si</b>	0.3 - 0.6	0.2 - 0.6
<b>Zn</b>	0.15	0.10
<b>Cr</b>	0.05	0.10
<b>Ti</b>	0.10	0.10
<b>Al</b>	dal 98% al 99%	dal 97.5% al 98.5%

The following table shows the Mechanical Properties of the Aluminium alloy used in the profile:

En-AW	6060	6063
<b>Rm [N/mm<sup>2</sup>]</b>	190	215
<b>Rp0.2 [N/mm<sup>2</sup>]</b>	150	170
<b>A [%]</b>	8	8
<b>HB</b>	70	75

## Physical Properties

The following table shows the Physical Properties of the Aluminium alloy used in the profile:

<b>E [N/mm<sup>2</sup>]</b>	69000
<b>ρ [Ω mm<sup>2</sup>/m]</b>	0.033
<b>λ W/mK</b>	210
<b>Tm [C°]</b>	615 - 655
<b>α [K-1]</b>	25 x 10 <sup>-6</sup>

## Profile Tapping depths

When tapping the end of the profile, we recommend that you follow the depths (L [mm]) given in the following table:

Slot / Nut	M	Depth
6	6	15
8	8	25

## Profile Torque settings

The maximum torque (C MAX) suggested for the assembly of Alusic components using a bolt or screw is as follows\*:

Slot / Nut	M	C Max (Nm)
6	6	10
8	8	20

\*Unless otherwise specified. Specific applications should be assessed on a case-by-case basis.

## Bending Diagram (opposite page)

The diagram shown on the right page provides a general indication of the bending characteristics of a bar of aluminium profile.

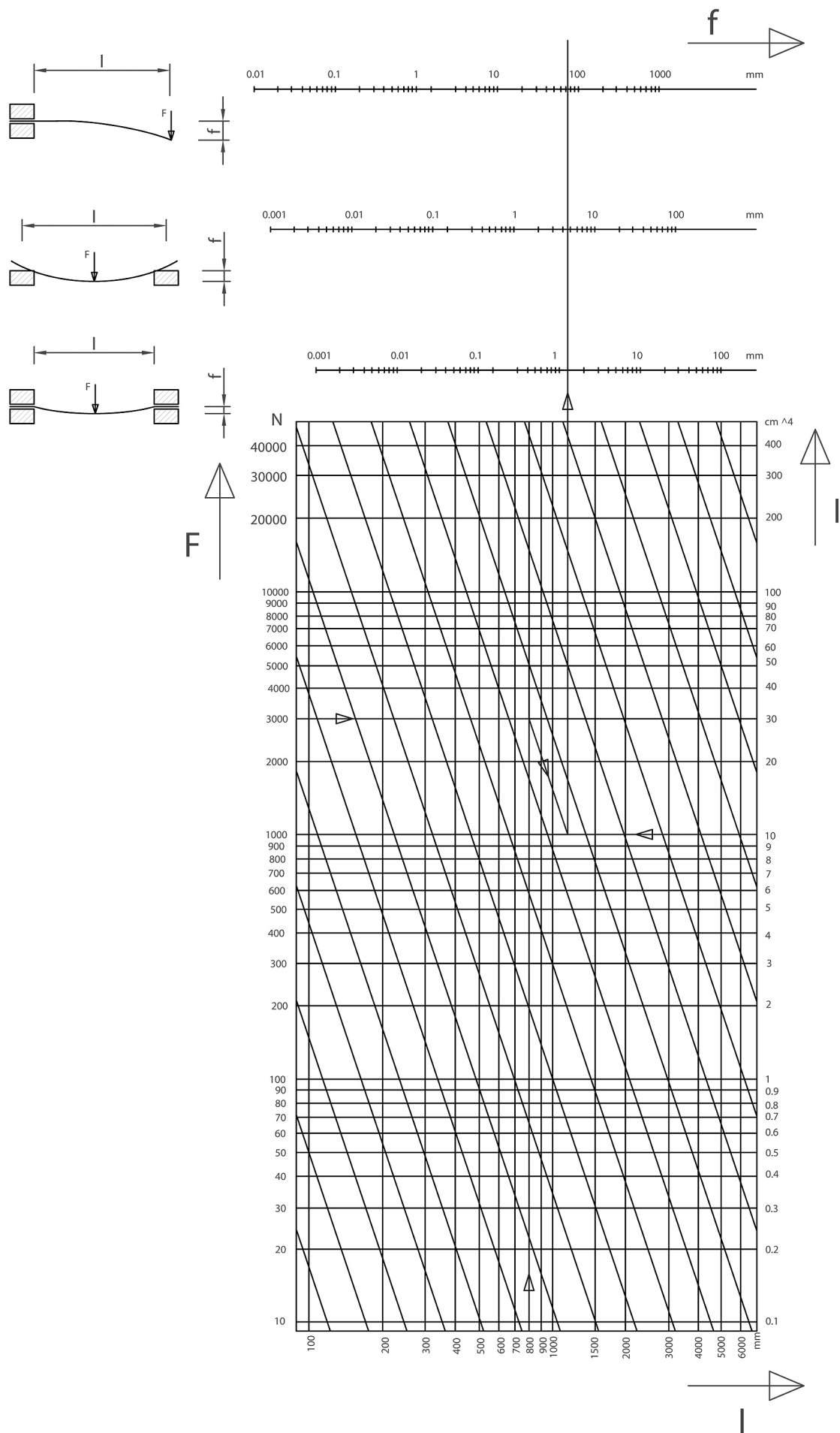
The sizing of any finished structure must be calculated on a case-by-case basis, and is the customer's responsibility.

Example:

Load: 3000 N

Moment of inertia: 10 cm<sup>4</sup>

Distance between supports: 800 mm



# Benefits of the Alusic Connector System

## Standard Nut and Bolt Connection

A simple, yet strong joint can be achieved by using both an Allen head screw and square washer screwed into the core hole of the profile (see image on left). A small pilot hole is drilled opposite where the joining profile is to be located so that the screw can be tightened. This is the standard joint for the Alusic range and is a very cost effective outcome.

The cost per Alusic connection as shown is \$0.52\* using an M8x20 bolt (ALS.084.301.003) and 13x13 square washer (ALS.084.303.001).

This method achieves an extremely simple, yet strong connection in just 1 minute.

A leading competitor's equivalent connection costs from \$4.84 each connection point and takes 3 to 5 times longer to achieve.

In some applications customer's may also choose to add our anti rotation device (ALS.084.303.006), that replaces the square washer in the standard connection. The twin tabs on the anti-rotation device go into the slots of the connecting profile and stop any twisting in the joint – a simple and effective solution.

## Connection System

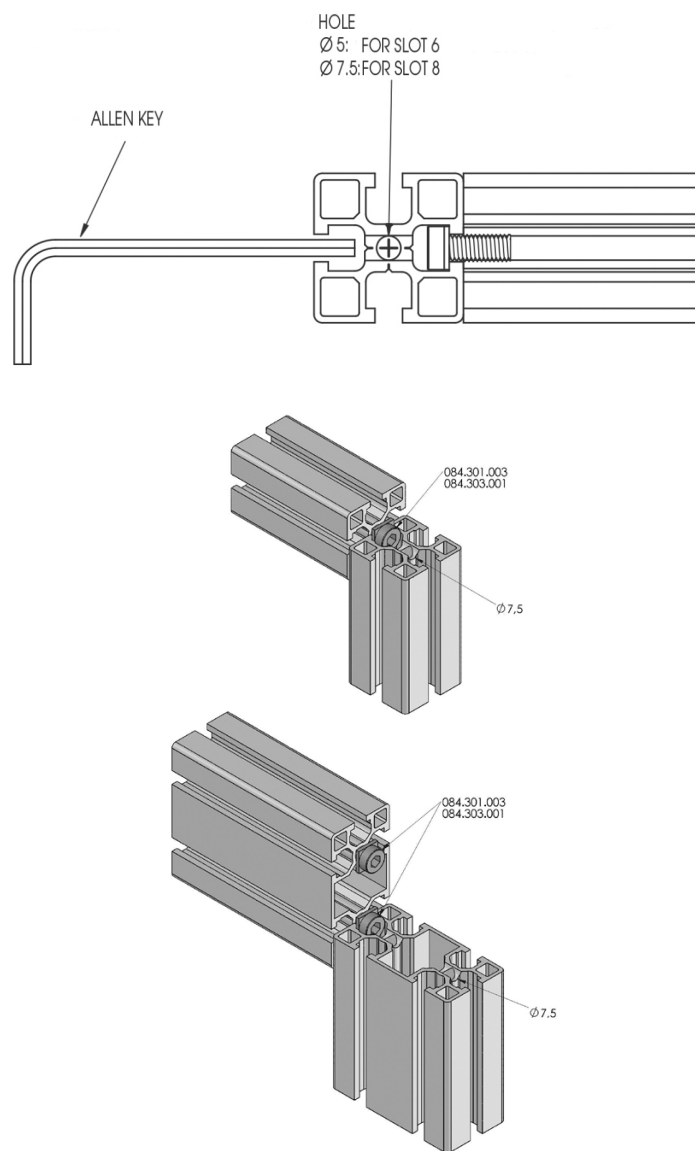
Typically the standard Alusic connector represents a significant time saving over the competitor's connection system. This time saving when multiplied over a large project, or on multiple assemblies can have substantial cost saving and production benefits.

Using the Alusic Connection System:

- First the drilling guide is attached to the selected profile
- Then a pilot hole is drilled according to the pre-determined holes on the drilling guide
- Next, the adjoining profile is tapped to M8
- Next, the Alusic connector is screwed into the tapped hole and slid into the adjoining profile and a 5mm allen key is inserted through the pilot hole and tightened.
- For extra strength in the joint, we recommend a drop of LocTite on the screw thread prior to joining.

**Tip** — a ball head allen key makes the job even easier!

\* Profilium's prices correct as of 1 March 2022.  
Prices subject to change without notice.





### No Milling or Special Tooling

The distance of the pilot hole required for an Alusic profile is pre-determined by the drilling jig with several millimetres of adjustment from side to side.

With the Alusic connecting system there is also the option of self tapping the screw into the adjoining profile as opposed to pre-tapping to ensure the connector has the best possible fit and to eliminate any possibility of vibration affecting the joint.

The potential for a loose join can also be eliminated with the use of thread locking products like LocTite although this is not essential as the connection is extremely effective without this process.



### Cost Benefit

To demonstrate some of the labour cost savings that can be achieved using the Alusic connector system we have performed a cost comparison exercise.

On the structure shown below, we conducted a time and motion study and have estimated the labour saving that could be achieved using the Alusic aluminium system when compared to a comparable, high quality European competitor's profile.

There are 350 individual connection points on this frame with a saving of between 300% to 500% in labour costs using Alusic's standard connector system.

In other words, if using a competitor's connector that takes up to 3 minutes per connection point, you would require 1,050 minutes or 17.5 hours just to complete the connections on this structure and it would cost \$1,694.00 just for materials cost of the connectors.

Using the Alusic connector it takes 1 minute per connection and you would complete the connections in 5.8 hours and with a cost of only \$182.00\* for the connectors! That is 3 times faster than the competitor and an enormous cost saving in labour alone.

Using the Alusic connecting system results in a saving of 11.7 labour hours per structure and \$1,512.00\* in material costs!



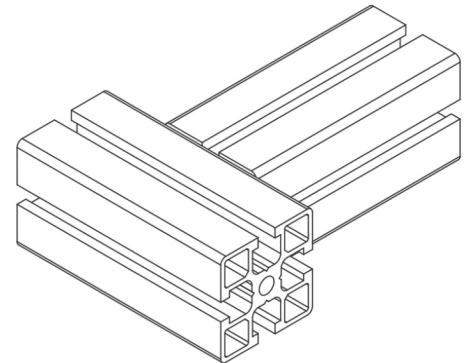
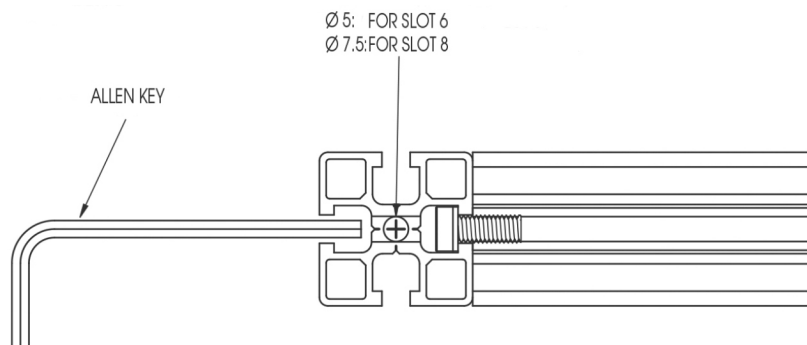
### How To Videos

For further information and advice on different methods of connecting profiles, scan the QR code to view a series of short "How To" videos.

\* Profilium's prices correct as of 1 March 2022.  
Prices subject to change without notice.

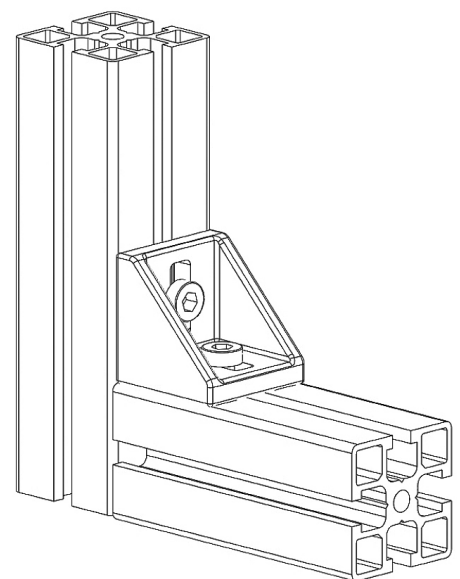
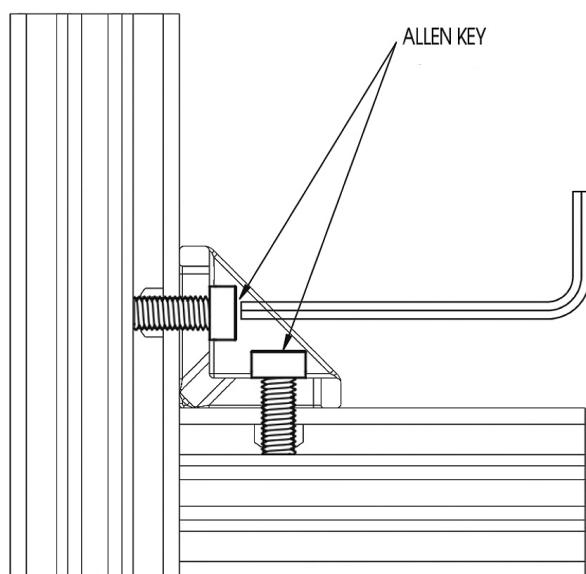
## Nut & Bolt Connection

The Standard Nut & Bolt connection uses a bolt to connect the profiles via the slot. It is a quick, simple and a very effective connection method. This is the most commonly used connection method we use and recommend.



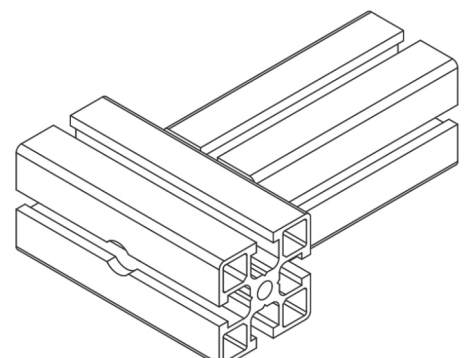
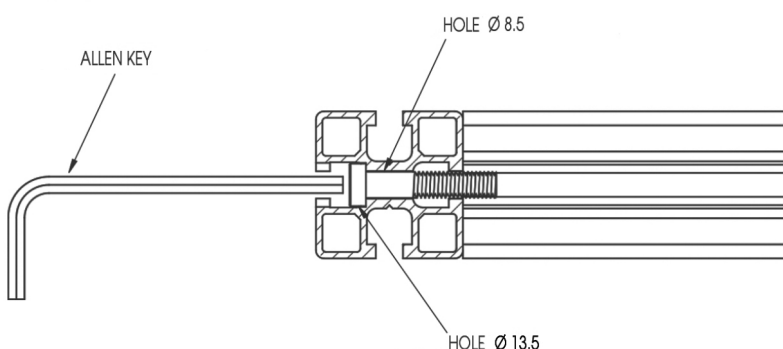
## Clamping Angle Connection

Using a Clamping Angle to fasten the profile provides a wide range of adjustment and easy installation. This is one of the most common connection methods we use and recommend.



## Bolt and Counterbore

Secure and simple, this solution ensures that parts will not slip if the screws come loose.





Standard Nut & Bolt Connection



Clamping angle connection



Clamping angle connection



Clamping angle for 20x20 profile



Variable swivel joint



90° angular joint



Clamping plate



Articulated joint



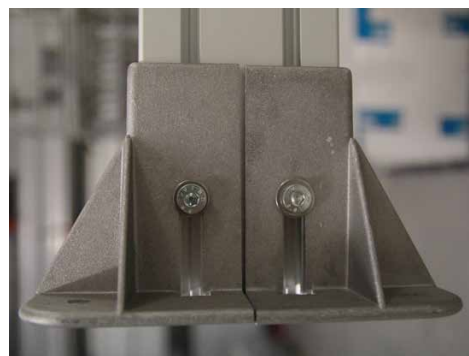
Quick release panel safety bracket



Caster wheel (braked)



Articulated foot and anchor bracket



Floor anchor base





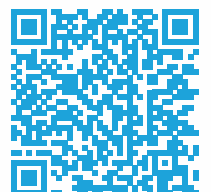
# **AC LINE**

## **T-slot Profiles**

### **30 Series**

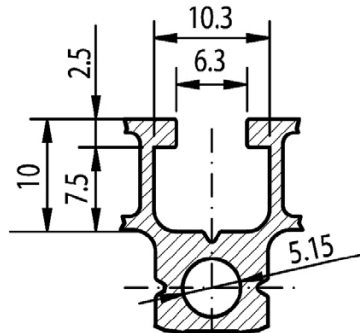
### **40 Series**

### **45 Series**



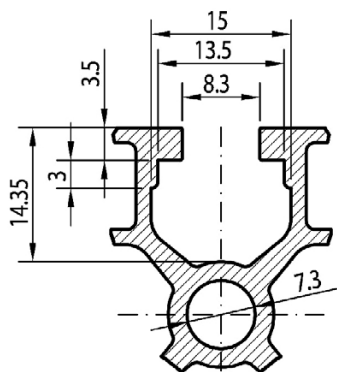
## 30 Series - 6mm slot profiles

Alusic 30 Series profiles feature a 6 mm square fastening t-slot and are one of the profiles with the best strength to weight ratios. This range can be fastened with M6 hardware using suitable accessories, or by tapping the bar ends. Nuts are available with M4, M5 and M6 threads; they can be inserted at any point in the slot, even after the initial assembly of the structure.



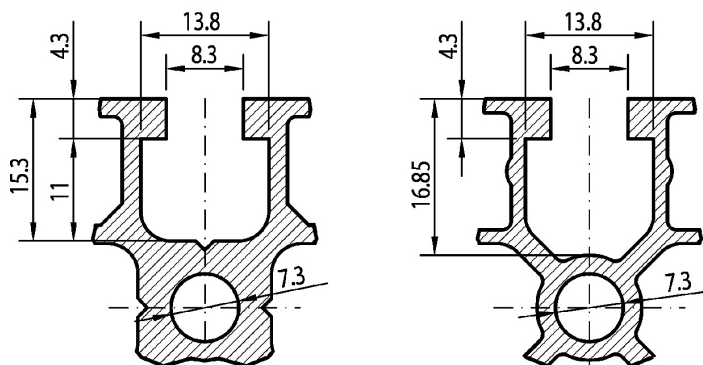
## 40 Series - 8mm slot profiles

Alusic 40 Series profiles feature an 8 mm square fastening t-slot and represent the perfect compromise between lightness and strength. This range can be fastened with M8 hardware using suitable accessories, or by tapping the ends of the bars. Regular and Spring nuts are available as M4, M5, M6 and M8; they can be inserted at any point in the slot, even after initial assembly of the structure.



## 45 Series - 8mm slot profiles

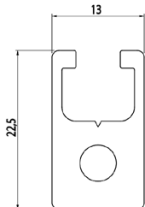
Alusic 45 Series profiles, with their 8 mm square fastening t-slot represent the most complete range in the Alusic catalogue; they include profiles with a cross-section from 18.5 to 180 mm. The range includes profiles with closed or tear-off slot which are ideal for the food sector; it is also the base profile for creating belt conveyors. Regular and Spring nuts are available as M4, M5, M6 and M8; they can be inserted at any point in the slot, even after initial assembly of the structure.



## ALS.084.100.001



13 x 22.5



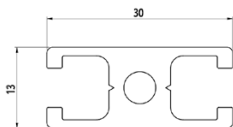
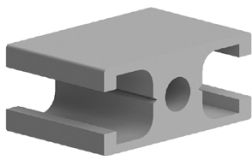
Code	lx cm <sup>4</sup>	ly cm <sup>4</sup>	wx cm <sup>3</sup>	wy cm <sup>3</sup>	mm <sup>2</sup>	Kg/m
ALS.084.100.001	0.69	0.35	0.50	0.53	180	0.49

- Material: Anodised aluminium
- Colour: Natural silver
- Length: 6040mm
- Slot type: 6mm
- Bar weight: 2.94 kg

## ALS.084.100.002



13 x 30



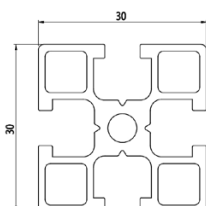
Code	lx cm <sup>4</sup>	ly cm <sup>4</sup>	wx cm <sup>3</sup>	wy cm <sup>3</sup>	mm <sup>2</sup>	Kg/m
ALS.084.100.002	1.08	0.42	0.72	0.63	186	0.50

- Material: Anodised aluminium
- Colour: Natural silver
- Length: 6040mm
- Slot type: 6mm
- Bar weight: 3.0 kg

## ALS.084.100.003



30 x 30



Code	lx cm <sup>4</sup>	ly cm <sup>4</sup>	wx cm <sup>3</sup>	wy cm <sup>3</sup>	mm <sup>2</sup>	Kg/m
ALS.084.100.003	2.39	2.39	1.59	1.59	288	0.78

- Material: Anodised aluminium
- Colour: Natural silver
- Length: 6040mm
- Slot type: 6mm
- Bar weight: 4.68 kg

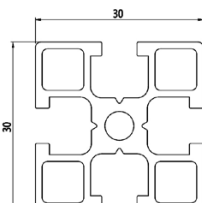
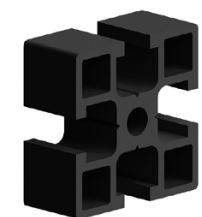
Images are a guide only. Actual products may vary.



## ALS.084.100.003N - BLACK



30 x 30



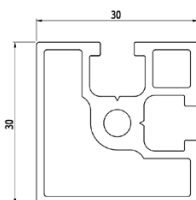
Code	$I_x \text{ cm}^4$	$I_y \text{ cm}^4$	$W_x \text{ cm}^3$	$W_y \text{ cm}^3$	$\text{mm}^2$	Kg/m
ALS.084.100.003N	2.39	2.39	1.59	1.59	288	0.78

- Material: Anodised aluminium
- Colour: Black
- Length: 6040mm
- Slot type: 6mm
- Bar weight: 4.68 kg

## ALS.084.100.004



30x30 2 slot



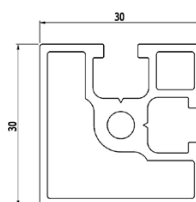
Code	$I_x \text{ cm}^4$	$I_y \text{ cm}^4$	$W_x \text{ cm}^3$	$W_y \text{ cm}^3$	$\text{mm}^2$	Kg/m
ALS.084.100.004	2.33	2.33	1.52	1.52	263	0.71

- Material: Anodised aluminium
- Colour: Natural silver
- Length: 6040mm
- Slot type: 6mm
- Bar weight: 4.26 kg

## ALS.084.100.004N - BLACK



30x30 2 slot



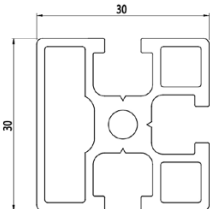
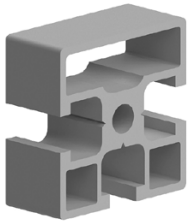
Code	$I_x \text{ cm}^4$	$I_y \text{ cm}^4$	$W_x \text{ cm}^3$	$W_y \text{ cm}^3$	$\text{mm}^2$	Kg/m
ALS.084.100.004N	2.33	2.33	1.52	1.52	263	0.71

- Material: Anodised aluminium
- Colour: Black
- Length: 6040mm
- Slot type: 6mm
- Bar weight: 4.26 kg

## ALS.084.100.005



30x30 3 slot



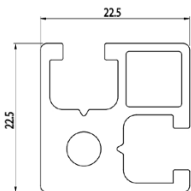
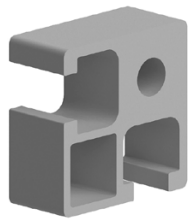
Code	$I_x \text{ cm}^4$	$I_y \text{ cm}^4$	$W_x \text{ cm}^3$	$W_y \text{ cm}^3$	$\text{mm}^2$	Kg/m
ALS.084.100.005	2.38	2.36	1.58	1.57	281	0.75

- Material: Anodised aluminium
- Colour: Natural silver
- Length: 6040mm
- Slot type: 6mm
- Bar weight: 4.50 kg

## ALS.084.100.007



22.5 x 22.5



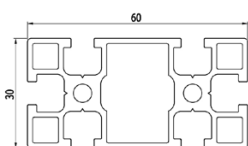
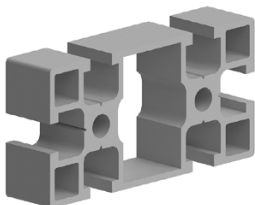
Code	$I_x \text{ cm}^4$	$I_y \text{ cm}^4$	$W_x \text{ cm}^3$	$W_y \text{ cm}^3$	$\text{mm}^2$	Kg/m
ALS.084.100.007	1.06	1.06	0.81	0.81	229	0.62

- Material: Anodised aluminium
- Colour: Natural silver
- Length: 6040mm
- Slot type: 6mm
- Bar weight: 3.72 kg

## ALS.084.100.006



30 x 60



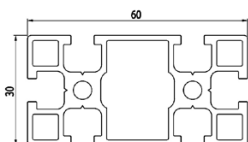
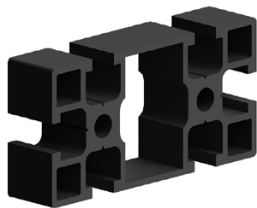
Code	$I_x \text{ cm}^4$	$I_y \text{ cm}^4$	$W_x \text{ cm}^3$	$W_y \text{ cm}^3$	$\text{mm}^2$	Kg/m
ALS.084.100.006	19.08	4.65	6.40	3.10	527	1.43

- Material: Anodised aluminium
- Colour: Natural silver
- Length: 6040mm
- Slot type: 6mm
- Bar weight: 8.58 kg

## ALS.084.100.006N - BLACK



30 x 60



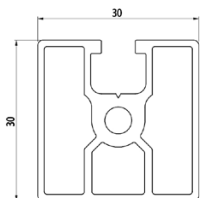
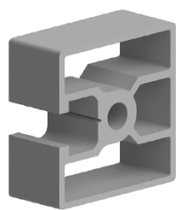
Code	$I_x \text{ cm}^4$	$I_y \text{ cm}^4$	$W_x \text{ cm}^3$	$W_y \text{ cm}^3$	$\text{mm}^2$	Kg/m
ALS.084.100.006N	19.08	4.65	6.40	3.10	527	1.43

- Material: Anodised aluminium
- Colour: Black
- Length: 6040mm
- Slot type: 6mm
- Bar weight: 8.58 kg

## ALS.084.100.010



30x30 1 slot



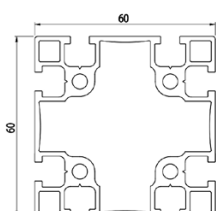
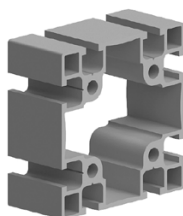
Code	$I_x \text{ cm}^4$	$I_y \text{ cm}^4$	$W_x \text{ cm}^3$	$W_y \text{ cm}^3$	$\text{mm}^2$	Kg/m
ALS.084.100.010	2.65	2.64	1.73	1.77	258	0.78

- Material: Anodised aluminium
- Colour: Natural silver
- Length: 6040mm
- Slot type: 6mm
- Bar weight: 4.68 kg

## ALS.084.100.011



60 x 60

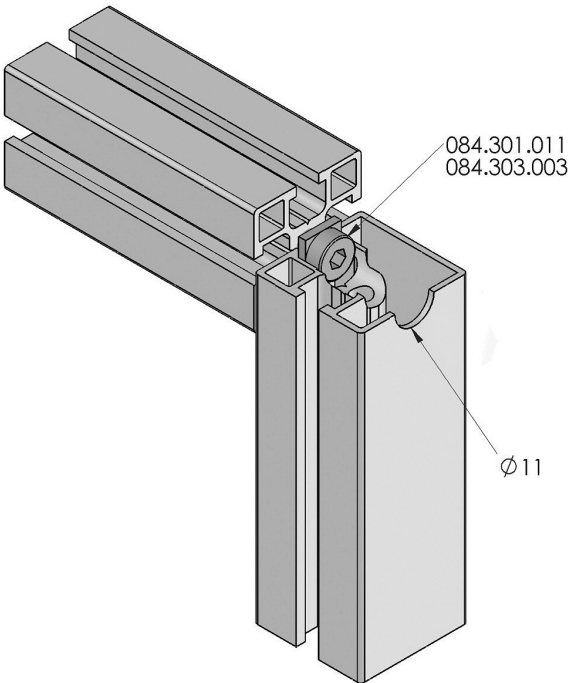
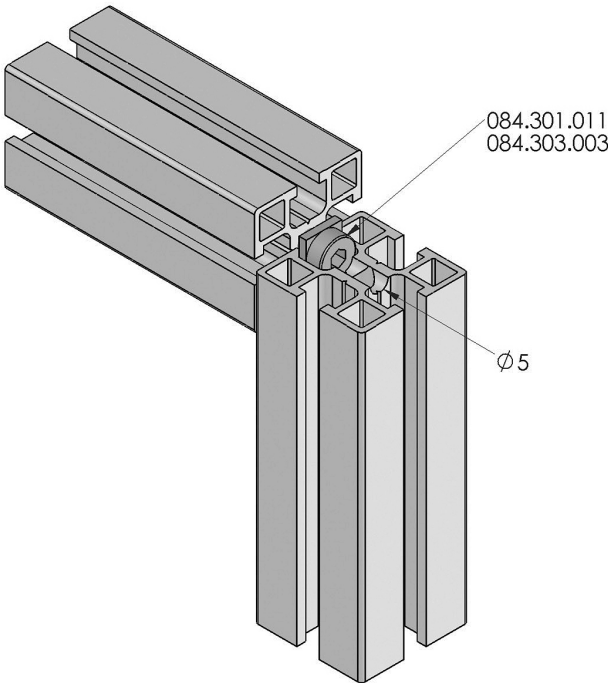


Code	$I_x \text{ cm}^4$	$I_y \text{ cm}^4$	$W_x \text{ cm}^3$	$W_y \text{ cm}^3$	$\text{mm}^2$	Kg/m
ALS.084.100.011	32.81	32.81	10.94	10.94	808	2.18

- Material: Anodised aluminium
- Colour: Natural silver
- Length: 6040mm
- Slot type: 6mm
- Bar weight: 13.08 kg



30 Series Assembly System

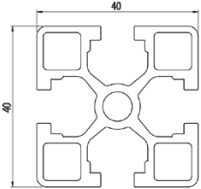
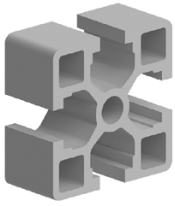


Images are a guide only. Actual products may vary. Not to scale.

## ALS.084.102.001



40 x 40



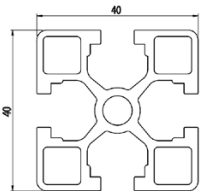
Code	lx cm <sup>4</sup>	ly cm <sup>4</sup>	wx cm <sup>3</sup>	wy cm <sup>3</sup>	mm <sup>2</sup>	Kg/m
ALS.084.102.001	7.95	7.95	3.98	3.98	505	1.37

- Material: Anodised aluminium
- Colour: Natural silver
- Length: 6040mm
- Slot type: 8mm
- Bar weight: 8.22kg

## ALS.084.102.001N - Black



40 x 40



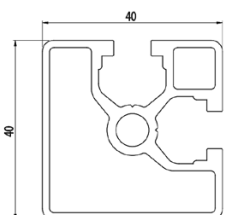
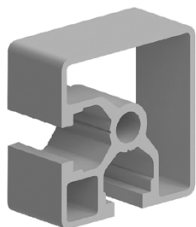
Code	lx cm <sup>4</sup>	ly cm <sup>4</sup>	wx cm <sup>3</sup>	wy cm <sup>3</sup>	mm <sup>2</sup>	Kg/m
ALS.084.102.001N	7.95	7.95	3.98	3.98	505	1.37

- Material: Anodised aluminium
- Colour: Black
- Length: 6040mm
- Slot type: 8mm
- Bar weight: 8.22kg

## ALS.084.102.004



40x40 2 slot



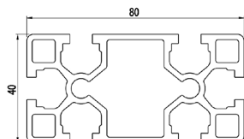
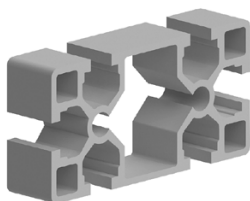
Code	lx cm <sup>4</sup>	ly cm <sup>4</sup>	wx cm <sup>3</sup>	wy cm <sup>3</sup>	mm <sup>2</sup>	Kg/m
ALS.084.102.004	6.80	7.07	3.40	3.53	425	1.15

- Material: Anodised aluminium
- Colour: Natural silver
- Length: 6040mm
- Slot type: 8mm
- Bar weight: 6.9kg

## ALS.084.102.002



40 x 80



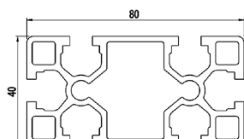
Code	$I_x \text{ cm}^4$	$I_y \text{ cm}^4$	$W_x \text{ cm}^3$	$W_y \text{ cm}^3$	$\text{mm}^2$	Kg/m
ALS.084.102.002	55.83	15.06	13.96	7.53	843	2.28

- Material: Anodised aluminium
- Colour: Natural silver
- Length: 6040mm
- Slot type: 8mm
- Bar weight: 13.68kg

## ALS.084.102.002N - Black



40 x 80



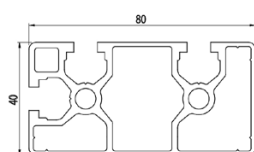
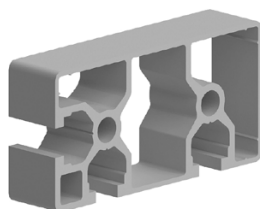
Code	$I_x \text{ cm}^4$	$I_y \text{ cm}^4$	$W_x \text{ cm}^3$	$W_y \text{ cm}^3$	$\text{mm}^2$	Kg/m
ALS.084.102.002N	55.83	15.06	13.96	7.53	843	2.28

- Material: Anodised aluminium
- Colour: Black
- Length: 6040mm
- Slot type: 8mm
- Bar weight: 13.68kg

## ALS.084.102.007



40x80 Half closed



Code	$I_x \text{ cm}^4$	$I_y \text{ cm}^4$	$W_x \text{ cm}^3$	$W_y \text{ cm}^3$	$\text{mm}^2$	Kg/m
ALS.084.102.007	49.19	13.52	12.30	6.76	765	2.07

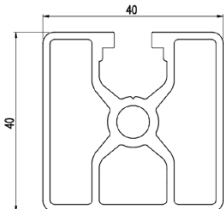
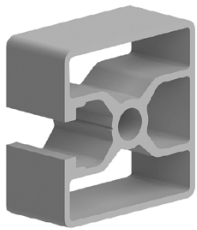
- Material: Anodised aluminium
- Colour: Natural silver
- Length: 6040mm
- Slot type: 8mm
- Bar weight: 12.42kg



## ALS.084.102.006



40x40 1 slot



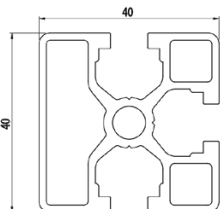
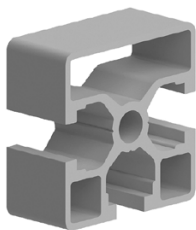
Code	lx cm <sup>4</sup>	ly cm <sup>4</sup>	wx cm <sup>3</sup>	wy cm <sup>3</sup>	mm <sup>2</sup>	Kg/m
ALS.084.102.006	7.40	6.68	3.70	3.34	435	1.18

- Material: Anodised aluminium
- Colour: Black
- Length: 6040mm
- Slot type: 8mm
- Bar weight: 7.08kg

## ALS.084.102.005



40x40 3 slot



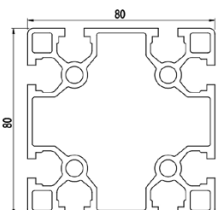
Code	lx cm <sup>4</sup>	ly cm <sup>4</sup>	wx cm <sup>3</sup>	wy cm <sup>3</sup>	mm <sup>2</sup>	Kg/m
ALS.084.102.005	7.67	7.30	3.84	3.65	470	1.28

- Material: Anodised aluminium
- Colour: Natural silver
- Length: 6040mm
- Slot type: 8mm
- Bar weight: 7.68kg

## ALS.084.102.003



80 x 80



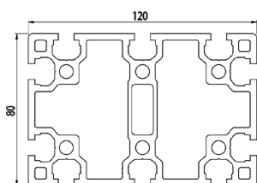
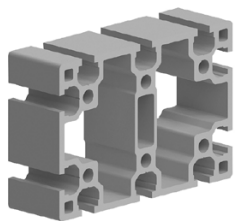
Code	lx cm <sup>4</sup>	ly cm <sup>4</sup>	wx cm <sup>3</sup>	wy cm <sup>3</sup>	mm <sup>2</sup>	Kg/m
ALS.084.102.003	103.74	103.74	25.94	25.94	1340	3.61

- Material: Anodised aluminium
- Colour: Natural silver
- Length: 6040mm
- Slot type: 8mm
- Bar weight: 21.66kg

## ALS.084.102.010



80x120 Heavy



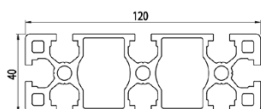
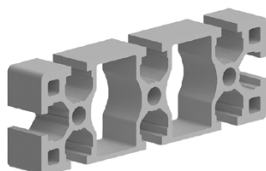
Code	$I_x \text{ cm}^4$	$I_y \text{ cm}^4$	$W_x \text{ cm}^3$	$W_y \text{ cm}^3$	$\text{mm}^2$	Kg/m
ALS.084.102.010	408.88	201.00	68.15	50.25	2695	7.28

- Material: Anodised aluminium
- Colour: Natural silver
- Length: 6040mm
- Slot type: 8mm
- Bar weight: 43.68kg

## ALS.084.102.011



40x120



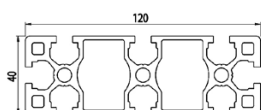
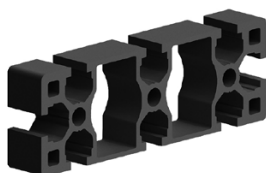
Code	$I_x \text{ cm}^4$	$I_y \text{ cm}^4$	$W_x \text{ cm}^3$	$W_y \text{ cm}^3$	$\text{mm}^2$	Kg/m
ALS.084.102.011	26.30	235.10	13.15	39.18	1468	3.97

- Material: Anodised aluminium
- Colour: Natural silver
- Length: 6040mm
- Slot type: 8mm
- Bar weight: 23.82kg

## ALS.084.102.011N - Black



40x120

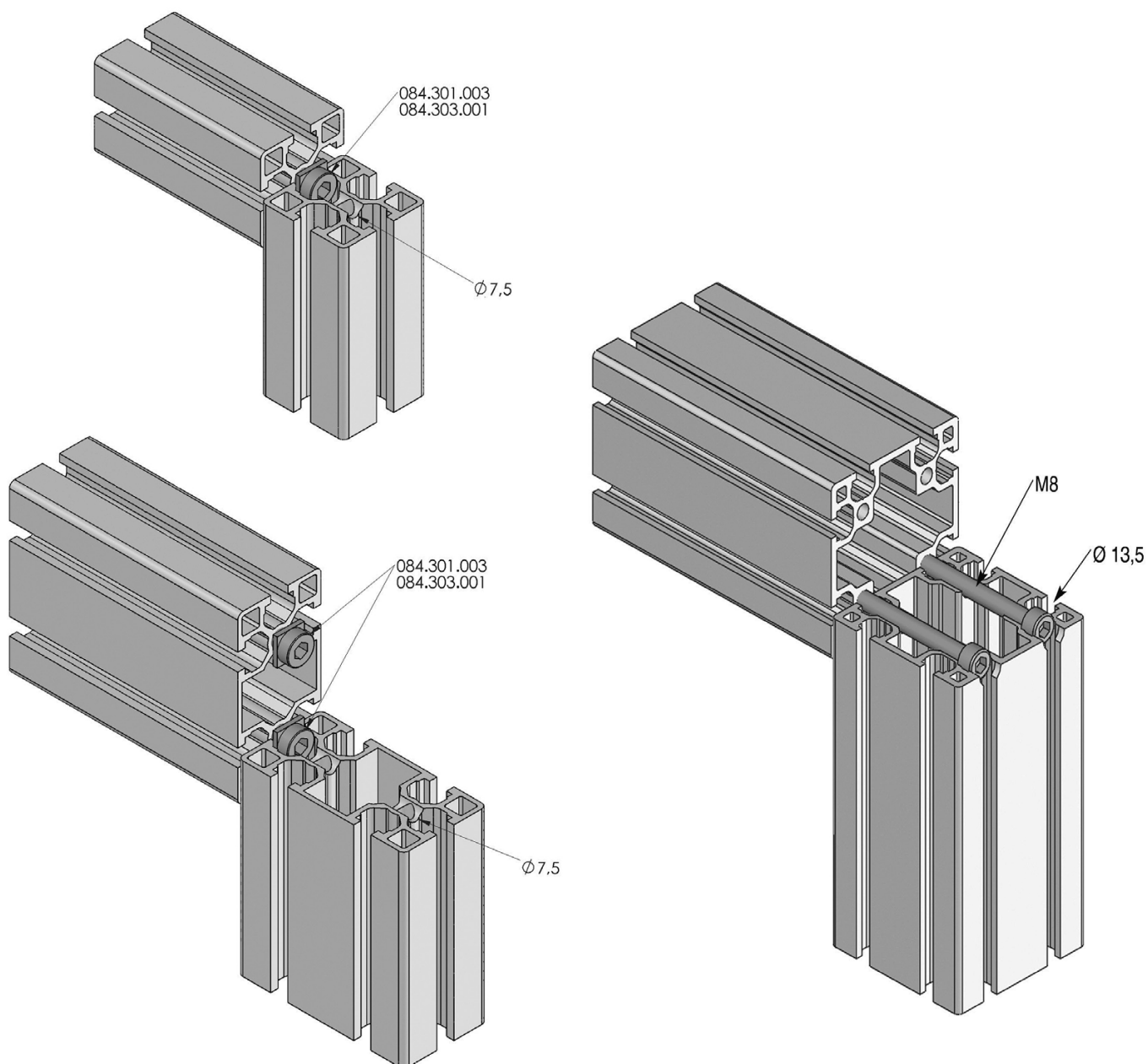


Code	$I_x \text{ cm}^4$	$I_y \text{ cm}^4$	$W_x \text{ cm}^3$	$W_y \text{ cm}^3$	$\text{mm}^2$	Kg/m
ALS.084.102.011N	26.30	235.10	13.15	39.18	1468	3.97

- Material: Anodised aluminium
- Colour: Black
- Length: 6040mm
- Slot type: 8mm
- Bar weight: 23.82kg

*Expected late 2022*

## 40 Series Assembly System

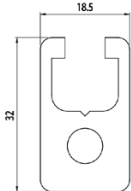


Images are a guide only. Actual products may vary. Not to scale.

## ALS.084.101.003



18.5 x 32



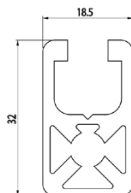
Code	lx cm <sup>4</sup>	ly cm <sup>4</sup>	wx cm <sup>3</sup>	wy cm <sup>3</sup>	mm <sup>2</sup>	Kg/m
ALS.084.101.003	2.93	1.39	1.83	1.51	366	0.99

- Material: Anodised aluminium
- Colour: Natural silver
- Length: 6040mm
- Slot type: 8mm
- Bar weight: 5.94kg

## ALS.084.101.043



18.5x32 slim



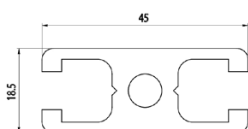
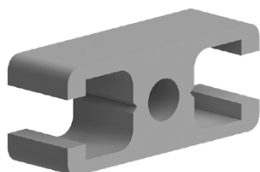
Code	lx cm <sup>4</sup>	ly cm <sup>4</sup>	wx cm <sup>3</sup>	wy cm <sup>3</sup>	mm <sup>2</sup>	Kg/m
ALS.084.101.043	2.46	1.15	1.54	1.24	265	0.72

- Material: Anodised aluminium
- Colour: Natural silver
- Length: 6040mm
- Slot type: 8mm
- Bar weight: 4.32kg

## ALS.084.101.004



18.5 x 45



Code	lx cm <sup>4</sup>	ly cm <sup>4</sup>	wx cm <sup>3</sup>	wy cm <sup>3</sup>	mm <sup>2</sup>	Kg/m
ALS.084.101.004	5.66	1.83	2.51	1.97	427	1.15

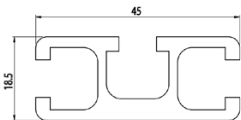
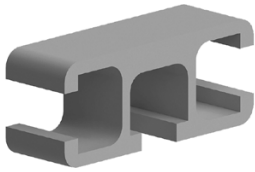
- Material: Anodised aluminium
- Colour: Natural silver
- Length: 6040mm
- Slot type: 8mm
- Bar weight: 6.9kg



ALS.084.101.005



18.5x45 3 slot



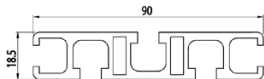
Code	$I_x \text{ cm}^4$	$I_y \text{ cm}^4$	$W_x \text{ cm}^3$	$W_y \text{ cm}^3$	$\text{mm}^2$	Kg/m
ALS.084.101.005	5.32	1.54	2.36	1.50	320	0.86

- Material: Anodised aluminium
- Colour: Natural silver
- Length: 6040mm
- Slot type: 8mm
- Bar weight: 5.16kg

ALS.084.101.006



18.5 x 90



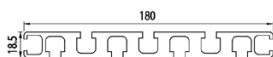
Code	$I_x \text{ cm}^4$	$I_y \text{ cm}^4$	$W_x \text{ cm}^3$	$W_y \text{ cm}^3$	$\text{mm}^2$	Kg/m
ALS.084.101.006	2.96	41.24	3.11	9.16	625	1.69

- Material: Anodised aluminium
- Colour: Natural silver
- Length: 6040mm
- Slot type: 8mm
- Bar weight: 10.14kg

ALS.084.101.007



18.5 x 180



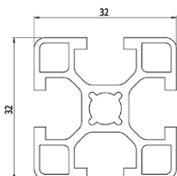
Code	$I_x \text{ cm}^4$	$I_y \text{ cm}^4$	$W_x \text{ cm}^3$	$W_y \text{ cm}^3$	$\text{mm}^2$	Kg/m
ALS.084.101.007	6.65	401	7.18	44.50	1704	4.65

- Material: Anodised aluminium
- Colour: Natural silver
- Length: 6040mm
- Slot type: 8mm
- Bar weight: 27.9kg

## ALS.084.101.030



32 x 32



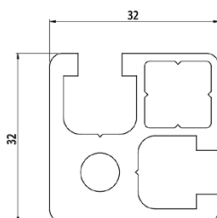
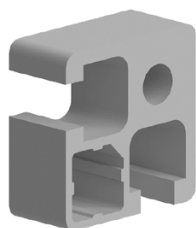
Code	$I_x \text{ cm}^4$	$I_y \text{ cm}^4$	$W_x \text{ cm}^3$	$W_y \text{ cm}^3$	$\text{mm}^2$	Kg/m
ALS.084.101.030	3.23	3.23	2.02	2.02	339	0.87

- Material: Anodised aluminium
- Colour: Natural silver
- Length: 6040mm
- Slot type: 8mm
- Bar weight: 5.22kg

## ALS.084.101.009



32x32 2 slot



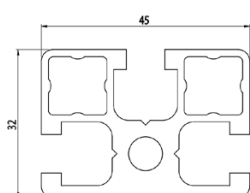
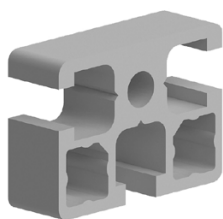
Code	$I_x \text{ cm}^4$	$I_y \text{ cm}^4$	$W_x \text{ cm}^3$	$W_y \text{ cm}^3$	$\text{mm}^2$	Kg/m
ALS.084.101.009	4.40	4.40	2.38	2.38	461	1.25

- Material: Anodised aluminium
- Colour: Natural silver
- Length: 6040mm
- Slot type: 8mm
- Bar weight: 7.5kg

## ALS.084.101.011



32 x 45



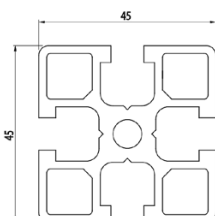
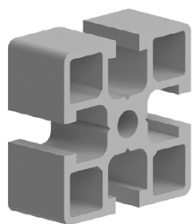
Code	$I_x \text{ cm}^4$	$I_y \text{ cm}^4$	$W_x \text{ cm}^3$	$W_y \text{ cm}^3$	$\text{mm}^2$	Kg/m
ALS.084.101.011	5.80	8.70	3.55	4.28	533	1.44

- Material: Anodised aluminium
- Colour: Natural silver
- Length: 6040mm
- Slot type: 8mm
- Bar weight: 8.64kg

## ALS.084.101.012



45 x 45



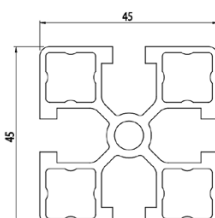
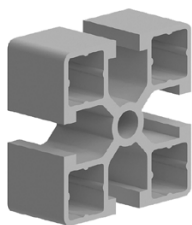
Code	$I_x \text{ cm}^4$	$I_y \text{ cm}^4$	$W_x \text{ cm}^3$	$W_y \text{ cm}^3$	$\text{mm}^2$	Kg/m
ALS.084.101.012	13.25	13.25	5.88	5.88	721	1.95

- Material: Anodised aluminium
- Colour: Natural silver
- Length: 6040mm
- Slot type: 8mm
- Bar weight: 11.7kg

## ALS.084.101.014



45x45 Light



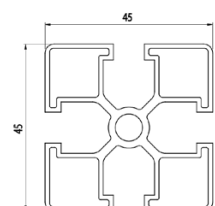
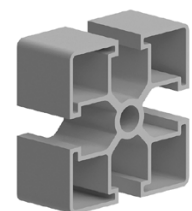
Code	$I_x \text{ cm}^4$	$I_y \text{ cm}^4$	$W_x \text{ cm}^3$	$W_y \text{ cm}^3$	$\text{mm}^2$	Kg/m
ALS.084.101.014	11.04	11.04	4.90	4.90	567	1.53

- Material: Anodised aluminium
- Colour: Natural silver
- Length: 6040mm
- Slot type: 8mm
- Bar weight: 9.18kg

## ALS.084.101.042



45x45 slim



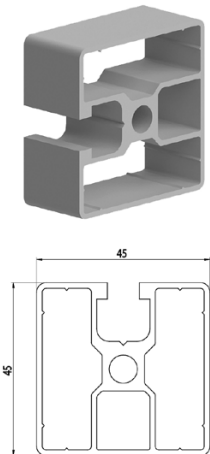
Code	$I_x \text{ cm}^4$	$I_y \text{ cm}^4$	$W_x \text{ cm}^3$	$W_y \text{ cm}^3$	$\text{mm}^2$	Kg/m
ALS.084.101.042	8.09	8.09	3.59	3.59	430	1.25

- Material: Anodised aluminium
- Colour: Natural silver
- Length: 6040mm
- Slot type: 8mm
- Bar weight: 7.5kg

## ALS.084.101.015



45x45 1 slot



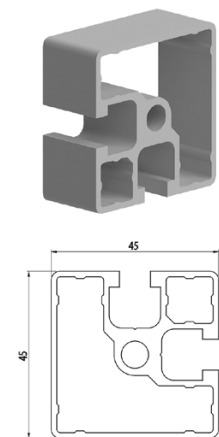
Code	$I_x \text{ cm}^4$	$I_y \text{ cm}^4$	$W_x \text{ cm}^3$	$W_y \text{ cm}^3$	$\text{mm}^2$	Kg/m
ALS.084.101.015	8.89	10.05	3.95	4.47	470	1.27

- Material: Anodised aluminium
- Colour: Natural silver
- Length: 6040mm
- Slot type: 8mm
- Bar weight: 7.62kg

## ALS.084.101.016



45x45 2 slot corner



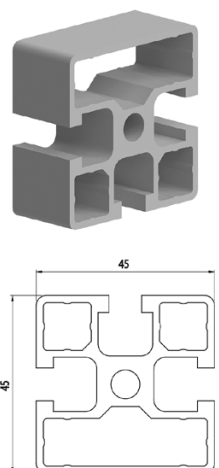
Code	$I_x \text{ cm}^4$	$I_y \text{ cm}^4$	$W_x \text{ cm}^3$	$W_y \text{ cm}^3$	$\text{mm}^2$	Kg/m
ALS.084.101.016	9.78	9.80	4.04	4.04	500	1.36

- Material: Anodised aluminium
- Colour: Natural silver
- Length: 6040mm
- Slot type: 8mm
- Bar weight: 8.16kg

## ALS.084.101.036



45x45 3 slot



Code	$I_x \text{ cm}^4$	$I_y \text{ cm}^4$	$W_x \text{ cm}^3$	$W_y \text{ cm}^3$	$\text{mm}^2$	Kg/m
ALS.084.101.036	11.32	11.94	5.03	5.30	616	1.66

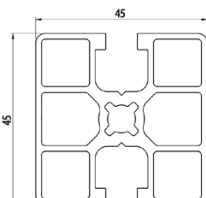
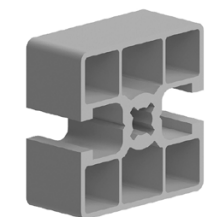
- Material: Anodised aluminium
- Colour: Natural silver
- Length: 6040mm
- Slot type: 8mm
- Bar weight: 9.96kg



## ALS.084.101.038



## 45x45 slot opposed



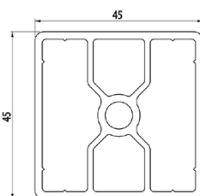
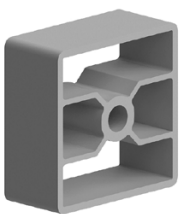
Code	$I_x \text{ cm}^4$	$I_y \text{ cm}^4$	$W_x \text{ cm}^3$	$W_y \text{ cm}^3$	$\text{mm}^2$	Kg/m
ALS.084.101.038	10.68	10.71	4.75	4.76	565	1.52

- Material: Anodised aluminium
- Colour: Natural silver
- Length: 6040mm
- Slot type: 8mm
- Bar weight: 9.12kg

## ALS.084.101.031



## 45x45 closed



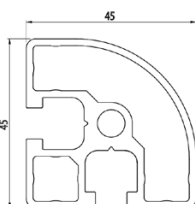
Code	$I_x \text{ cm}^4$	$I_y \text{ cm}^4$	$W_x \text{ cm}^3$	$W_y \text{ cm}^3$	$\text{mm}^2$	Kg/m
ALS.084.101.031	12.30	11.00	5.46	4.88	509	1.37

- Material: Anodised aluminium
- Colour: Natural silver
- Length: 6040mm
- Slot type: 8mm
- Bar weight: 8.22kg

## ALS.084.101.017



## 45x45 half round



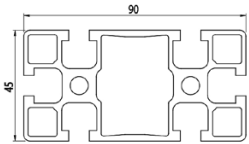
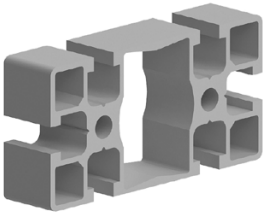
Code	$I_x \text{ cm}^4$	$I_y \text{ cm}^4$	$W_x \text{ cm}^3$	$W_y \text{ cm}^3$	$\text{mm}^2$	Kg/m
ALS.084.101.017	9.19	9.19	3.63	3.63	517	1.40

- Material: Anodised aluminium
- Colour: Natural silver
- Length: 6040mm
- Slot type: 8mm
- Bar weight: 8.4kg

## ALS.084.101.019



45 x 90



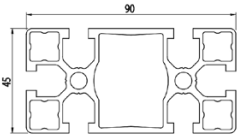
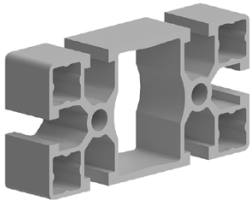
Code	$I_x \text{ cm}^4$	$I_y \text{ cm}^4$	$W_x \text{ cm}^3$	$W_y \text{ cm}^3$	$\text{mm}^2$	Kg/m
ALS.084.101.019	90.00	23.00	21.96	11.22	1112	3.00

- Material: Anodised aluminium
- Colour: Natural silver
- Length: 6040mm
- Slot type: 8mm
- Bar weight: 18kg

## ALS.084.101.021



45x90 light



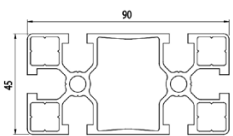
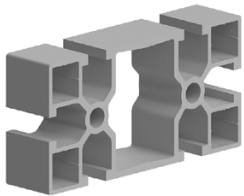
Code	$I_x \text{ cm}^4$	$I_y \text{ cm}^4$	$W_x \text{ cm}^3$	$W_y \text{ cm}^3$	$\text{mm}^2$	Kg/m
ALS.084.101.021	80.45	22.92	17.88	10.18	1038	2.81

- Material: Anodised aluminium
- Colour: Natural silver
- Length: 6040mm
- Slot type: 8mm
- Bar weight: 16.86kg

## ALS.084.101.029



45x90 slim



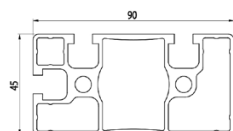
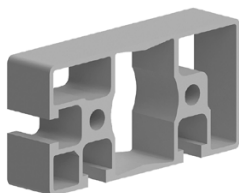
Code	$I_x \text{ cm}^4$	$I_y \text{ cm}^4$	$W_x \text{ cm}^3$	$W_y \text{ cm}^3$	$\text{mm}^2$	Kg/m
ALS.084.101.029	73.39	20.21	16.31	8.99	922	2.49

- Material: Anodised aluminium
- Colour: Natural silver
- Length: 6040mm
- Slot type: 8mm
- Bar weight: 14.94kg

## ALS.084.101.020



45x90 half closed



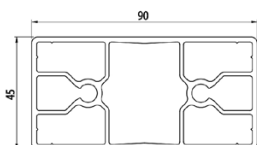
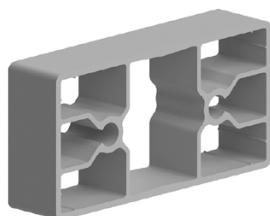
Code	$I_x \text{ cm}^4$	$I_y \text{ cm}^4$	$W_x \text{ cm}^3$	$W_y \text{ cm}^3$	$\text{mm}^2$	Kg/m
ALS.084.101.020	75.05	21.41	16.68	9.51	960	2.59

- Material: Anodised aluminium
- Colour: Natural silver
- Length: 6040mm
- Slot type: 8mm
- Bar weight: 15.54kg

## ALS.084.101.032



45x90 closed



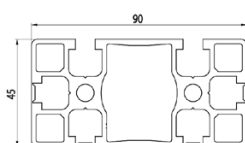
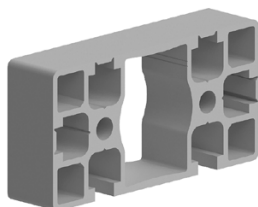
Code	$I_x \text{ cm}^4$	$I_y \text{ cm}^4$	$W_x \text{ cm}^3$	$W_y \text{ cm}^3$	$\text{mm}^2$	Kg/m
ALS.084.101.032	75.85	21.81	16.85	9.69	858	2.32

- Material: Anodised aluminium
- Colour: Natural silver
- Length: 6040mm
- Slot type: 8mm
- Bar weight: 13.92kg

## ALS.084.101.051



45x90 tear out



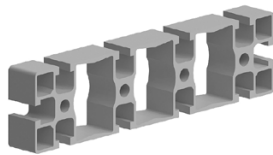
Code	$I_x \text{ cm}^4$	$I_y \text{ cm}^4$	$W_x \text{ cm}^3$	$W_y \text{ cm}^3$	$\text{mm}^2$	Kg/m
ALS.084.101.051	96.61	24.77	21.93	11.01	1180	3.18

- Material: Anodised aluminium
- Colour: Natural silver
- Length: 6040mm
- Slot type: 8mm
- Bar weight: 19.08kg

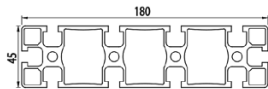
## ALS.084.101.022



45 x 180



Code	$I_x \text{ cm}^4$	$I_y \text{ cm}^4$	$W_x \text{ cm}^3$	$W_y \text{ cm}^3$	$\text{mm}^2$	Kg/m
ALS.084.101.022	48.33	689.89	21.48	76.65	2206	5.96

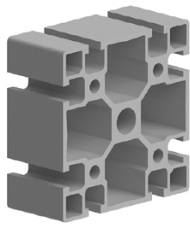


- Material: Anodised aluminium
- Colour: Natural silver
- Length: 6040mm
- Slot type: 8mm
- Bar weight: 35.76kg

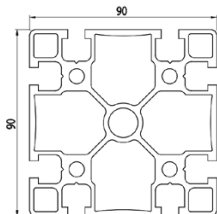
## ALS.084.101.023



90 x 90



Code	$I_x \text{ cm}^4$	$I_y \text{ cm}^4$	$W_x \text{ cm}^3$	$W_y \text{ cm}^3$	$\text{mm}^2$	Kg/m
ALS.084.101.023	170.58	170.58	37.90	37.90	2081	5.62

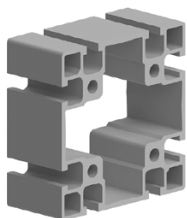


- Material: Anodised aluminium
- Colour: Natural silver
- Length: 6040mm
- Slot type: 8mm
- Bar weight: 33.72kg

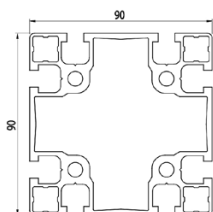
## ALS.084.101.024



90x90 light



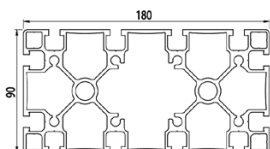
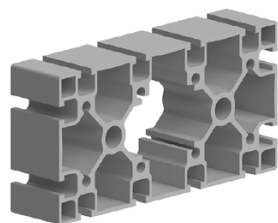
Code	$I_x \text{ cm}^4$	$I_y \text{ cm}^4$	$W_x \text{ cm}^3$	$W_y \text{ cm}^3$	$\text{mm}^2$	Kg/m
ALS.084.101.024	162.00	162.00	36.05	36.05	1815	4.96



- Material: Anodised aluminium
- Colour: Natural silver
- Length: 6040mm
- Slot type: 8mm
- Bar weight: 29.76kg



## ALS.084.101.026

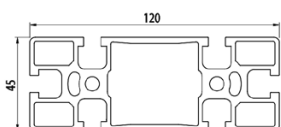
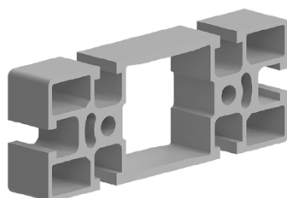


90 x 180

Code	lx cm <sup>4</sup>	ly cm <sup>4</sup>	wx cm <sup>3</sup>	wy cm <sup>3</sup>	mm <sup>2</sup>	Kg/m
ALS.084.101.026	294.80	1102.0	65.51	122.45	3677	9.93

- Material: Anodised aluminium
- Colour: Natural silver
- Length: 6040mm
- Slot type: 8mm
- Bar weight: 59.58kg

## ALS.084.101.027

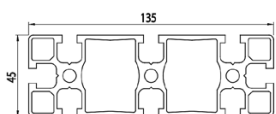
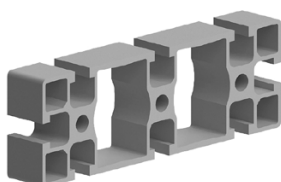


45 x 120

Code	lx cm <sup>4</sup>	ly cm <sup>4</sup>	wx cm <sup>3</sup>	wy cm <sup>3</sup>	mm <sup>2</sup>	Kg/m
ALS.084.101.027	32.64	221.97	37.00	14.50	1451	4.16

- Material: Anodised aluminium
- Colour: Natural silver
- Length: 6040mm
- Slot type: 8mm
- Bar weight: 24.96kg

## ALS.084.101.028



45 x 135

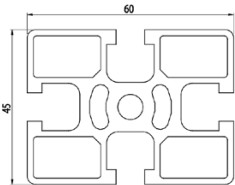
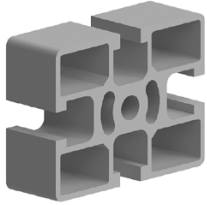
Code	lx cm <sup>4</sup>	ly cm <sup>4</sup>	wx cm <sup>3</sup>	wy cm <sup>3</sup>	mm <sup>2</sup>	Kg/m
ALS.084.101.028	36.97	304.13	16.43	45.06	1671	4.51

- Material: Anodised aluminium
- Colour: Natural silver
- Length: 6040mm
- Slot type: 8mm
- Bar weight: 27.06kg

## ALS.084.101.018



45 x 60



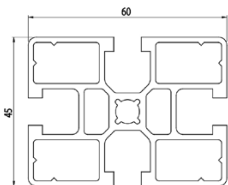
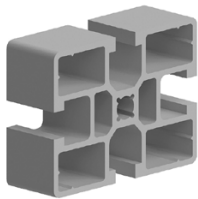
Code	Ix cm <sup>4</sup>	Iy cm <sup>4</sup>	wx cm <sup>3</sup>	wy cm <sup>3</sup>	mm <sup>2</sup>	Kg/m
ALS.084.101.018	27.24	16.50	9.08	7.13	885	2.39

- Material: Anodised aluminium
- Colour: Natural silver
- Length: 6040mm
- Slot type: 8mm
- Bar weight: 14.34kg

## ALS.084.101.041



45x60 light



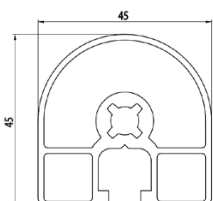
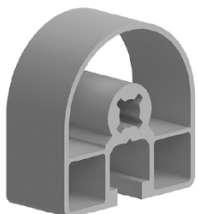
Code	Ix cm <sup>4</sup>	Iy cm <sup>4</sup>	wx cm <sup>3</sup>	wy cm <sup>3</sup>	mm <sup>2</sup>	Kg/m
ALS.084.101.041	25.43	14.99	8.48	6.66	750	2.04

- Material: Anodised aluminium
- Colour: Natural silver
- Length: 6040mm
- Slot type: 8mm
- Bar weight: 12.24kg

## ALS.084.101.037



45x45 round



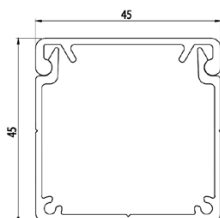
Code	Ix cm <sup>4</sup>	Iy cm <sup>4</sup>	wx cm <sup>3</sup>	wy cm <sup>3</sup>	mm <sup>2</sup>	Kg/m
ALS.084.101.037	7.25	7.94	2.78	3.53	453	1.22

- Material: Anodised aluminium
- Colour: Natural silver
- Length: 6040mm
- Slot type: 8mm
- Bar weight: 7.32kg

## ALS.084.101.053



## 45x45 cable channel



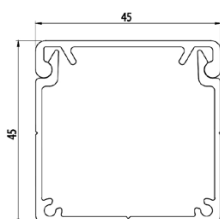
Code	lx cm <sup>4</sup>	ly cm <sup>4</sup>	wx cm <sup>3</sup>	wy cm <sup>3</sup>	mm <sup>2</sup>	Kg/m
ALS.084.101.053	-	-	-	-	-	0.7

- Material: Anodised aluminium
- Colour: Natural silver
- Length: 6040mm
- Slot type: 8mm
- Bar weight: 4.2kg

## ALS.084.101.054



## 45x 45 Cable cover



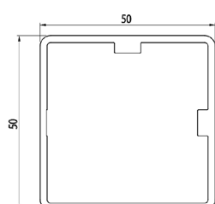
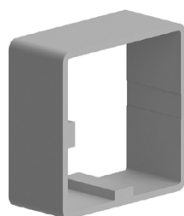
Code	lx cm <sup>4</sup>	ly cm <sup>4</sup>	wx cm <sup>3</sup>	wy cm <sup>3</sup>	mm <sup>2</sup>	Kg/m
ALS.084.101.054	-	-	-	-	-	0.4

- Material: Anodised aluminium
- Colour: Natural silver
- Length: 6040mm
- Slot type: 8mm
- Piece weight: 2.4kg

## ALS.084.101.063



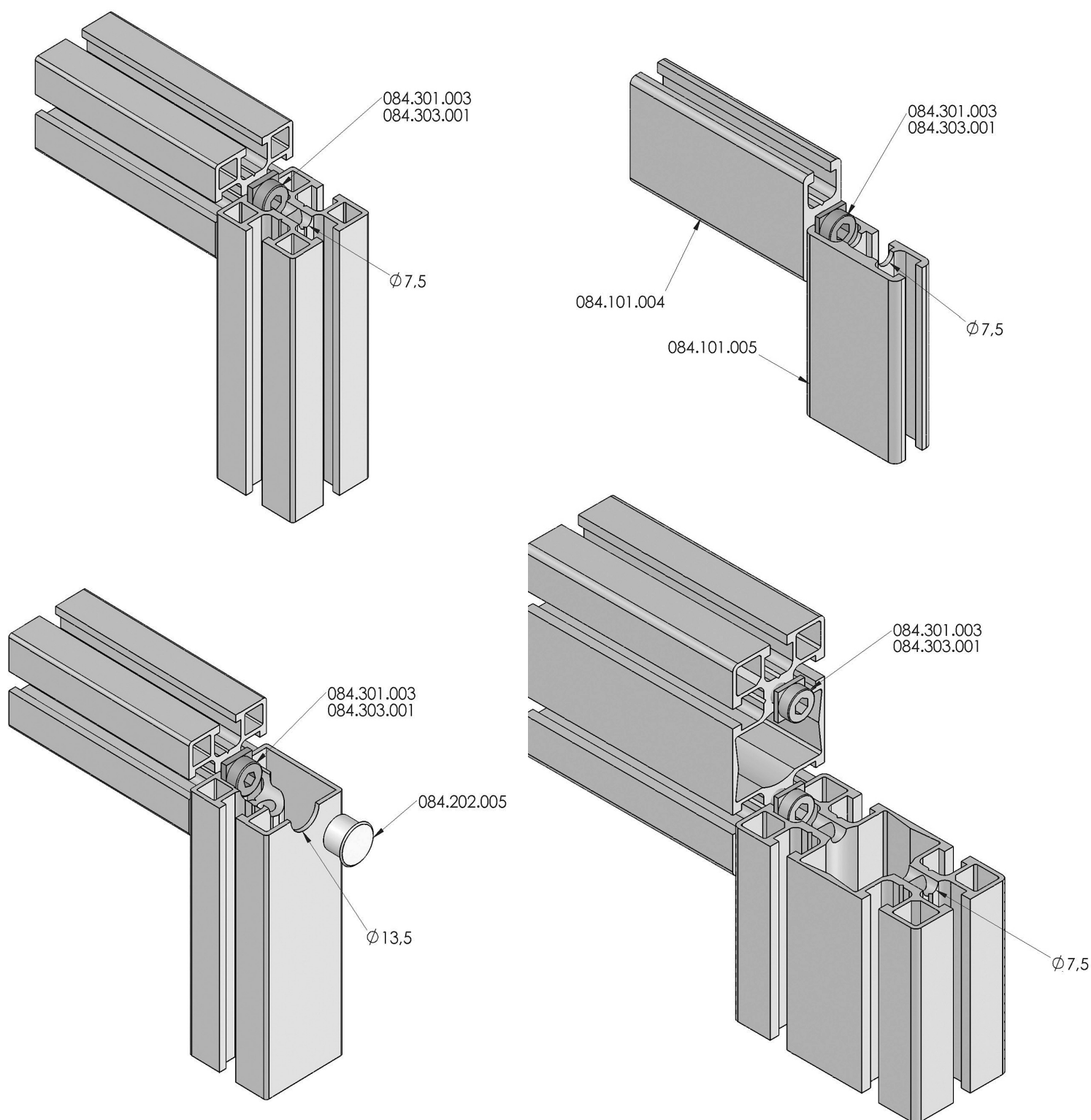
## 50x50 telescopic



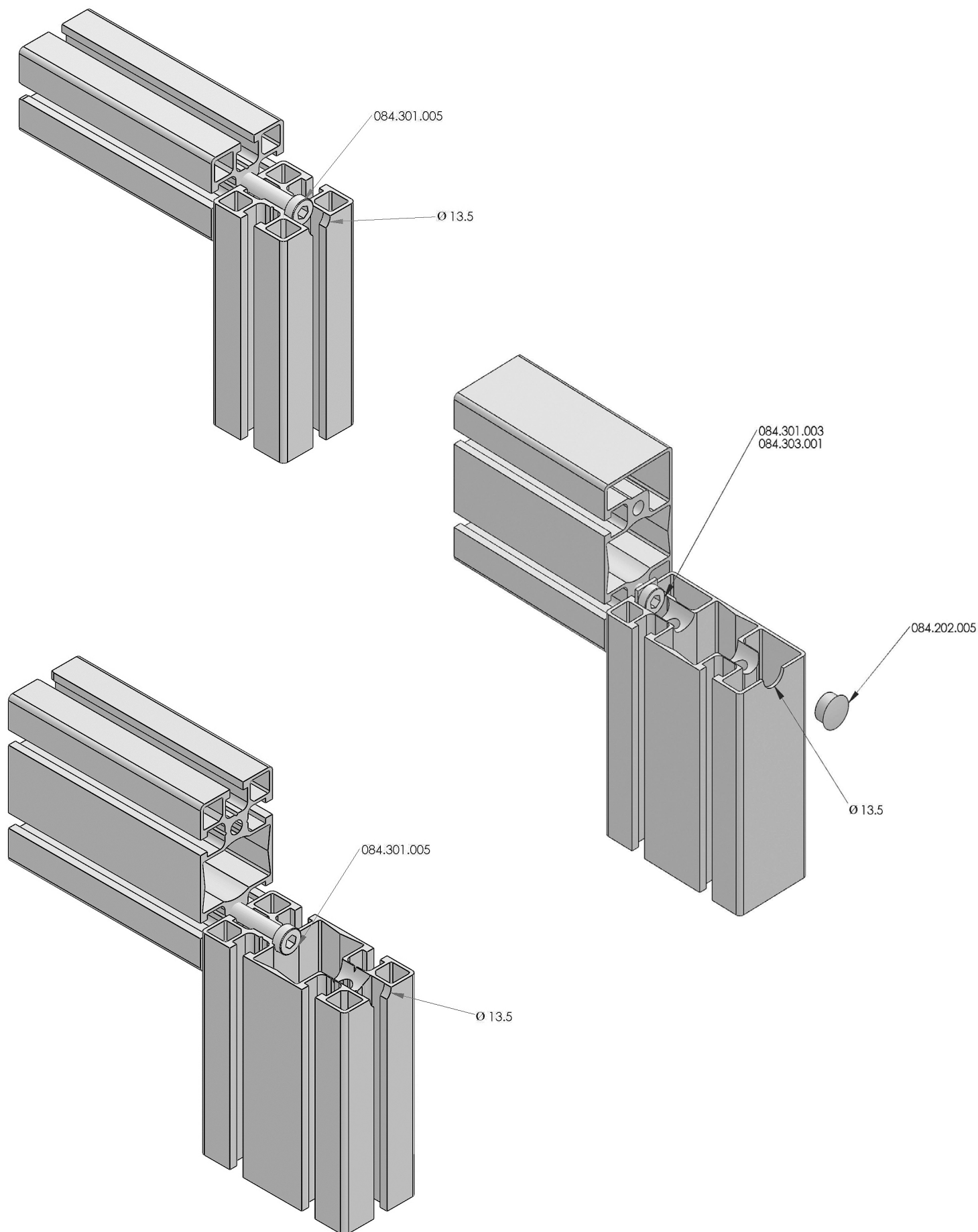
Code	lx cm <sup>4</sup>	ly cm <sup>4</sup>	wx cm <sup>3</sup>	wy cm <sup>3</sup>	mm <sup>2</sup>	Kg/m
ALS.084.101.063	15.30	15.30	6.12	6.12	422	1.14

- Fits over a 45x45 profile to make an adjustable section
- Material: Anodised aluminium
- Colour: Natural silver
- Length: 6040mm
- Slot type: 8mm
- Bar weight: 6.84kg

## 45 Series Assembly System



Images are a guide only. Actual products may vary. Not to scale.







# **BH LINE**

## **T-slot Profiles**

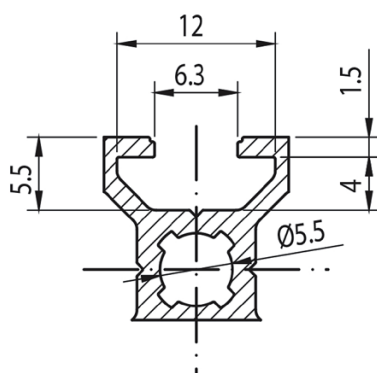
### **20 Series**

### **30 Series**



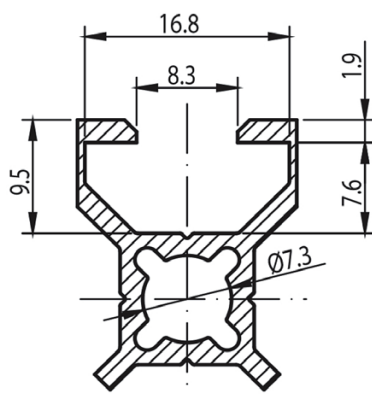
## 20 Series - 6mm slot profiles

Alusic 20 Series profiles feature a 6 mm fastening T-slot and are one of the lightest ranges in the Alusic catalogue. This range can be fastened with M6 hardware using suitable accessories, or by M6 threading at the ends of the bars. Nuts are available with M4 and M5 threads; they can be inserted at any point in the slot, even following initial assembly of the structure.



## 30 Series - 8mm slot profiles

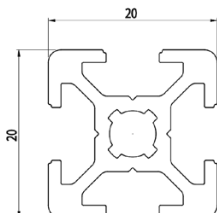
Alusic 30 Series profiles feature an 8 mm fastening T-slot and are one of the ranges with the best strength to weight ratios. 30 Series 8mm slot profiles can be fastened with M8 hardware using suitable accessories, or by M8 threading at the ends of the bars. Nuts are available with M4, M5 and M6 threads; they can be inserted at any point in the slot, even following initial assembly of the structure.



## ALS.084.111.001



20 x 20



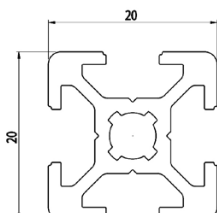
Code	lx cm <sup>4</sup>	ly cm <sup>4</sup>	wx cm <sup>3</sup>	wy cm <sup>3</sup>	mm <sup>2</sup>	Kg/m
ALS.084.111.001	0.67	0.67	0.67	0.67	164.83	0.45

- Material: Anodised aluminium
- Colour: Natural silver
- Length: 6040mm
- Slot type: 6mm
- Bar weight: 2.7kg

## ALS.084.111.001N - Black



20 x 20



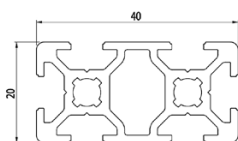
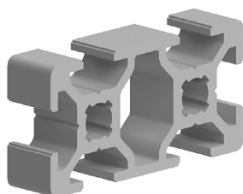
Code	lx cm <sup>4</sup>	ly cm <sup>4</sup>	wx cm <sup>3</sup>	wy cm <sup>3</sup>	mm <sup>2</sup>	Kg/m
ALS.084.111.001N	0.67	0.67	0.67	0.67	164.83	0.45

- Material: Anodised aluminium
- Colour: Black
- Length: 6040mm
- Slot type: 6mm
- Bar weight: 2.7kg

## ALS.084.111.002



20 x 40



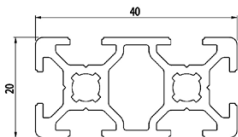
Code	lx cm <sup>4</sup>	ly cm <sup>4</sup>	wx cm <sup>3</sup>	wy cm <sup>3</sup>	mm <sup>2</sup>	Kg/m
ALS.084.111.002	4.64	1.20	1.32	1.20	289.7	0.78

- Material: Anodised aluminium
- Colour: Natural silver
- Length: 6040mm
- Slot type: 6mm
- Bar weight: 4.68kg

ALS.084.111.002N



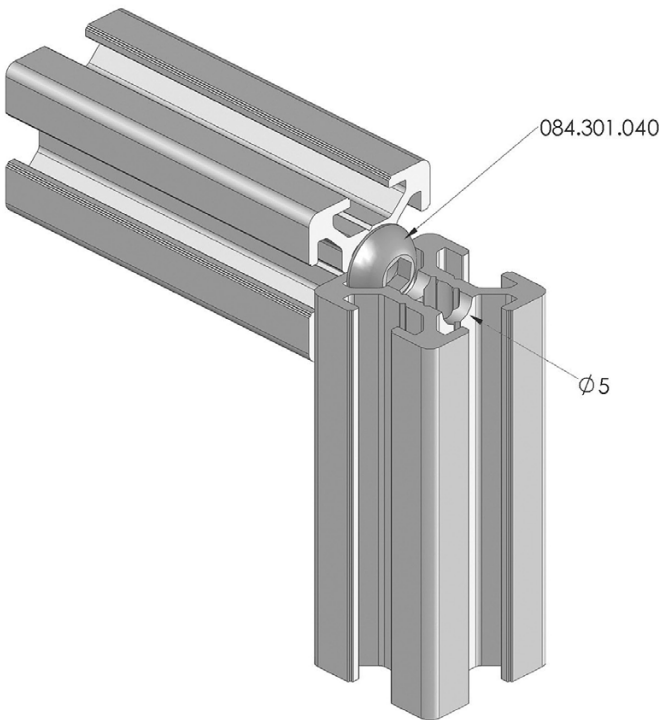
20 x 40



Code	lx cm <sup>4</sup>	ly cm <sup>4</sup>	wx cm <sup>3</sup>	wy cm <sup>3</sup>	mm <sup>2</sup>	Kg/m
ALS.084.111.002N	4.64	1.20	1.32	1.20	289.7	0.78

- Material: Anodised aluminium
- Colour: Black
- Length: 6040mm
- Slot type: 6mm
- Bar weight: 4.68kg

20 Series Assembly System

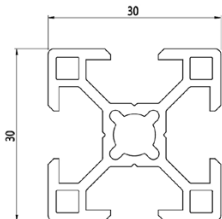
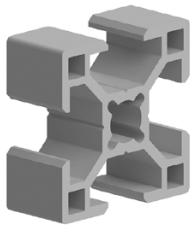


Images are a guide only. Actual products may vary. Not to scale.

## ALS.084.107.002 - 8mm slot



30 x 30



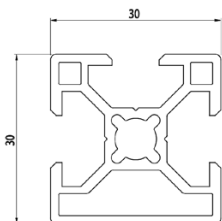
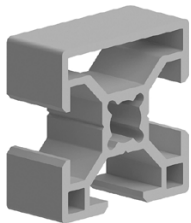
Code	lx cm <sup>4</sup>	ly cm <sup>4</sup>	wx cm <sup>3</sup>	wy cm <sup>3</sup>	mm <sup>2</sup>	Kg/m
ALS.084.107.002	2.60	2.60	1.73	1.73	273	0.74

- Material: Anodised aluminium
- Colour: Natural silver
- Length: 6040mm
- Slot type: 8mm
- Bar weight: 4.44kg

## ALS.084.107.006 - 8mm slot



30x30 3 slot



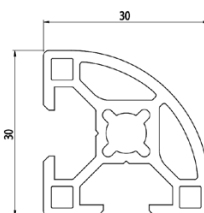
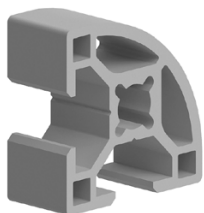
Code	lx cm <sup>4</sup>	ly cm <sup>4</sup>	wx cm <sup>3</sup>	wy cm <sup>3</sup>	mm <sup>2</sup>	Kg/m
ALS.084.107.006	2.54	2.68	1.77	1.70	275	0.74

- Material: Anodised aluminium
- Colour: Natural silver
- Length: 6040mm
- Slot type: 8mm
- Bar weight: 4.44kg

## ALS.084.107.005 - 8mm slot



30x30 half round



Code	lx cm <sup>4</sup>	ly cm <sup>4</sup>	wx cm <sup>3</sup>	wy cm <sup>3</sup>	mm <sup>2</sup>	Kg/m
ALS.084.107.005	1.84	2.88	1.23	1.92	289.13	0.78

- Material: Anodised aluminium
- Colour: Natural silver
- Length: 6040mm
- Slot type: 8mm
- Bar weight: 4.68kg

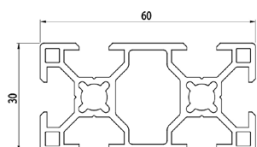
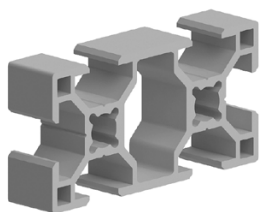
Images are a guide only. Actual products may vary. Not to scale.



## ALS.084.107.003 - 8mm slot



30 x 60



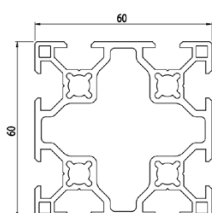
Code	$I_x \text{ cm}^4$	$I_y \text{ cm}^4$	$w_x \text{ cm}^3$	$w_y \text{ cm}^3$	$\text{mm}^2$	Kg/m
ALS.084.107.003	17.54	4.57	58.85	3.05	487	1.32

- Material: Anodised aluminium
- Colour: Natural silver
- Length: 6040mm
- Slot type: 8mm
- Bar weight: 7.92kg

## ALS.084.107.004 - 8mm slot



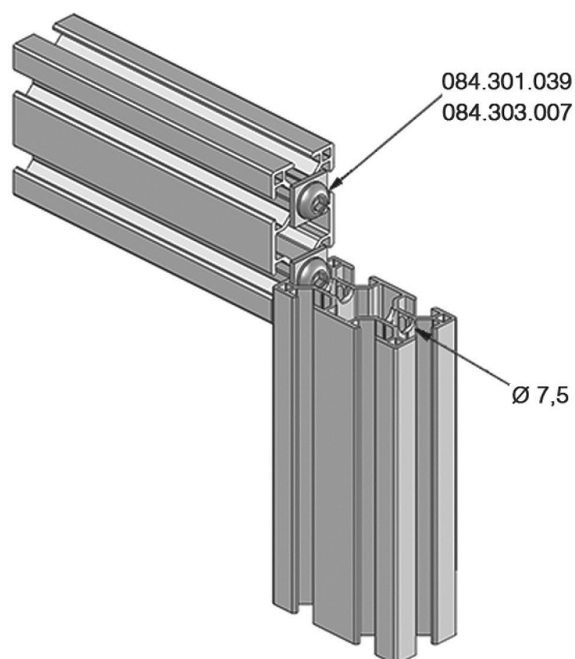
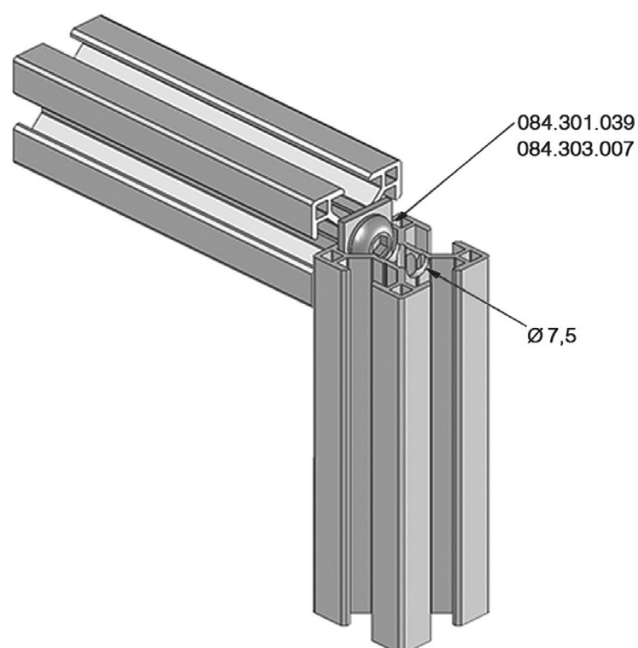
60 x 60



Code	$I_x \text{ cm}^4$	$I_y \text{ cm}^4$	$w_x \text{ cm}^3$	$w_y \text{ cm}^3$	$\text{mm}^2$	Kg/m
ALS.084.107.004	33.79	33.79	11.26	11.26	856.6	2.3

- Material: Anodised aluminium
- Colour: Natural silver
- Length: 6040mm
- Slot type: 8mm
- Bar weight: 13.8kg

## 30 Series - 8mm slot Assembly System



# Accessories for Aluminium Profiles

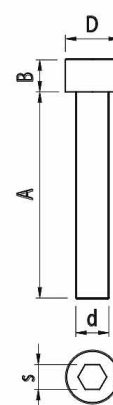


This section shows a small selection of the Accessories stocked locally in Australia. For full details on all of our Accessories, please visit our website.

Code	Note	d	A	D	B	s	g
ALS.084.301.001	M6x20	M6	20	10	4	4	6
ALS.084.301.002	M8x16	M8	16	13	5	5	8
ALS.084.301.003	M8x20	M8	20	13	5	5	10
ALS.084.301.004	M8x25	M8	25	13	5	5	12
ALS.084.301.009	M5x12	M5	12	8	3.5	3	3
ALS.084.301.010	M6x12	M6	12	10	4	4	4
ALS.084.301.011	M6x16	M6	16	10	4	4	5
ALS.084.301.025	M8x20 SS	M8	20	13	8	6	13
ALS.084.301.029	M8x16 SS	M8	16	13	8	6	11
ALS.084.301.031	M8x30 SS	M8	30	13	8	6	16
ALS.084.301.033	M8x25 SS	M8	25	13	8	6	15
ALS.084.301.035	M5x16	M5	16	8	3.5	3	3

- Material: Galvanised Steel or Stainless Steel (SS)
- Sold in packs of 25
- Other sizes available
- Images are a guide only. Actual products may vary. Not to scale.

## Bolts



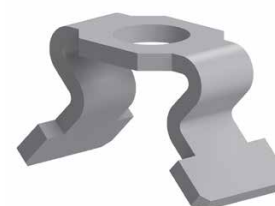
## Washers and Anti-Rotation

Code	Note	LxW	D	g	Profile Slot
ALS.084.303.003	10x10 washer	Ø6mm	-	1	6mm slot
ALS.084.303.001	13x13 Washer	Ø8mm	-	1	8mm slot
ALS.084.303.006	Anti-rotation device	13.3x16	30	4	8mm slot

- Material: Galvanised Steel
- Washers sold in packs of 25
- Images are a guide only. Actual products may vary. Not to scale.

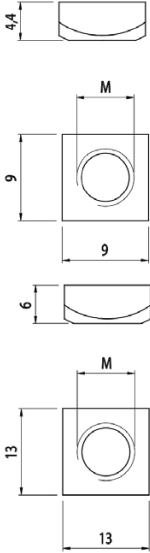
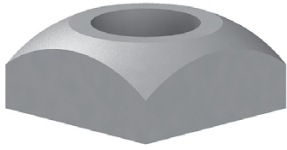


ALS.084.303.001



ALS.084.303.006

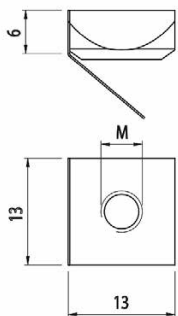
## T-Nuts



Code	Note	LxW	D	g	Profile Slot
ALS.084.302.001	Nut M4	13x13	6	3	8mm slot
ALS.084.302.002	Nut M5	13x13	6	3	8mm slot
ALS.084.302.003	Nut M6	13x13	6	3	8mm slot
ALS.084.302.006	Nut M8	13x13	6	3	8mm slot
ALS.084.302.013	Nut M4	9x9	4.4	2	6mm slot
ALS.084.302.014	Nut M5	9x9	4.4	2	6mm slot
ALS.084.302.015	Nut M6	9x9	4.4	2	6mm slot
ALS.084.302.037	Nut M8 SS	13x13	6	3	8mm slot

- Material: Galvanised steel / Stainless (SS)
- Sold in packs of 25

## Spring Nuts



Code	Note	LxW	D	g	Profile Slot
ALS.084.302.006	Nut M4	13x13	6	6	8mm slot
ALS.084.302.006	Nut M5	13x13	6	5	8mm slot
ALS.084.302.008	Nut M6	13x13	6	5	8mm slot
ALS.084.302.009	Nut M8	13x13	6	4	8mm slot
ALS.084.302.038	Nut M8 SS	13x13	6	4	8mm slot

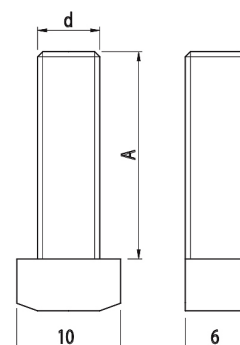
- Material: Galvanised steel / Stainless Steel (SS)
- Sold in packs of 25
- Images are a guide only. Actual products may vary. Not to scale.

Images are a guide only. Actual products may vary.

Code	Note	d	A	D	B	s	g
ALS.084.301.041	M6x12	M6	12	-	-	-	8
ALS.084.301.043	M6x20	M6	20	-	-	-	10
ALS.084.301.044	M6x25	M6	25	-	-	-	11
ALS.084.301.049	M6x20 6mm slot	M6	20	-	-	-	10
ALS.084.301.050	M8x20	M8	20	-	-	-	15
ALS.084.301.051	M8x25	M8	25	-	-	-	16
ALS.084.301.052	M8x30	M8	30	-	-	-	17
ALS.084.301.053	M8x35	M8	35	-	-	-	18

- Material: Galvanised steel
- Other sizes available

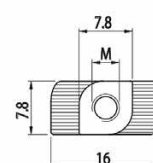
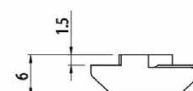
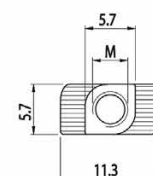
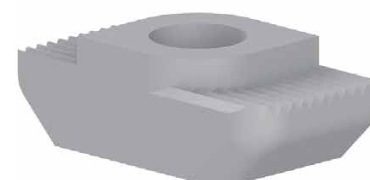
## Hammer Bolts



## Hammer Nuts

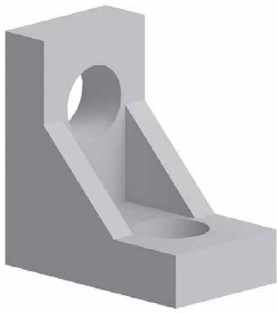
Code	Note	LxW	D	g	Profile Slot
ALS.084.302.021	Nut M4	11.3x5.7	4	1	6mm slot
ALS.084.302.022	Nut M5	16x7.8	6	4	8mm slot
ALS.084.302.023	Nut M6	16x7.8	6	3.5	8mm slot
ALS.084.302.024	Nut M8	16x7.8	6	3	8mm slot
ALS.084.302.061	Nut M6	11.3x5.7	4.4	1	6mm slot
ALS.084.302.026	Nut M5	19x9.8	8.4	2	10 mm slot
ALS.084.302.029	Nut M8 SS	19.9.8	8.4	1	10mm slot

- Material: Galvanised steel / Stainless (SS)
- Sold in packs of 25
- Images are a guide only. Actual products may vary. Not to scale.





## Clamping Angles



ALS.084.305.006



ALS.084.305.009



ALS.084.305.033



ALS.084.305.029



ALS.084.305.011

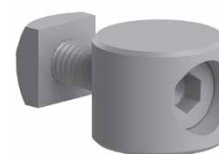
Code	Description	Recommended Profile	Suggested Bolt	g
ALS.084.305.001	18x40	20 Series 30 Series-6	M6	20
ALS.084.305.002	25x40	40 Series	M8x20	30
ALS.084.305.003	43x43	45 Series	M8x20	60
ALS.084.305.006	13x22	20 Series 30 Series	M6x12	6
ALS.084.305.007	27.5x59	30 Series	M6x16	46
ALS.084.305.008	59x59	30 Series	M6x16	93
ALS.084.305.009	39x39	40 Series	M8x20	50
ALS.084.305.010	29x29	30 Series	M6x16	29
ALS.084.305.016	30x30 SS	30 Series	M8x16	23
ALS.084.305.022	80x80	40 Series	M8x20	234
ALS.084.305.024	40x80	40 Series	M8x20	115
ALS.084.305.027	43x86 anti-rotation	45 Series	M8x20	162
ALS.084.305.029	86x86 anti-rotation	45 Series	M8x20	334
ALS.084.305.032	18x18 anti-rotation	20 Series	M5x12	5
ALS.084.305.041	18x40	40 Series	M8x20	20
ALS.084.305.046	40x40 (painted)	40 Series	M8x20	77
ALS.084.305.048	40x80 (painted)	40 Series	M8x20	270
ALS.084.305.011	Joint Angle 40x40 45°	40 Series	M8x16 (profile)	210
ALS.084.305.018	Joint Angle 40x80 45°	40 Series	M8x20 (tapped)	350

- Material: Sandblasted aluminium / Stainless steel (SS)
- Images to the right are examples of some of the clamping angles in the range. Please see our website for full details of each clamping angle.
- Images are a guide only. Actual products may vary. Not to scale.

## Connectors

Code	Description	Recommended Profile	Use bolt	g
ALS.084.306.001	Pawl clamp Ø16	8mm profiles	M6x25*	25
ALS.084.306.002	Pawl clamp Ø20	8mm profiles	M8x40*	50
ALS.084.306.010	Pawl clamp Ø12	6mm profiles	M5x20*	25
ALS.084.307.002	45° angular joint	8mm profiles	M6 grub screws*	56
ALS.084.307.004	90° angular joint	8mm profiles	M6 grub screws*	58
ALS.084.307.007	Variable swivel joint	8mm profiles	M6 grub screws*	59
ALS.084.307.008	Articulated joint	8mm profiles	M6 grub screws*	55
ALS.084.307.006	Linear joint 180mm	8mm profiles	M8 grub screws*	124
ALS.084.310.004	Cube joint 22.5×22.5	30 series	M6x20	20
ALS.084.310.005	Cube joint 30×30	30 series	M6x20	60
ALS.084.311.009	Articulated joint 30×30	30 Series	-	55
ALS.084.311.010	Articulated joint 40×40	40 Series	-	140
ALS.084.310.015	Articulated joint 45×45	45 Series	-	210
ALS.084.310.011	Articulated joint 40×80	40 Series	-	997
ALS.084.310.012	Articulated joint 45×90	45 Series	-	1120
ALS.084.310.019	Swivel joint 45×45	45 Series	-	240
ALS.084.710.002	40×40 Joint Plate	40 Series	-	88
ALS.084.710.003	40×80 Joint Plate	40 Series	-	730
ALS.084.710.004	45×45 Joint Plate	45 Series	-	132
ALS.084.710.001	45×90 Joint Plate	45 Series	-	730

- This is a small sample of some of the commonly used connectors. Many are available in 6mm and 8mm variants. Please see our web shop for the full range.
- \*Nuts and/or Bolts are included with this connector type
- Images are a guide only. Actual products may vary. Not to scale.



ALS.084.306.010



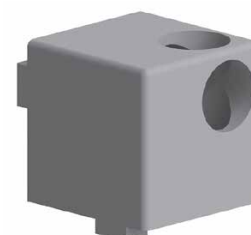
ALS.084.307.002



ALS.084.307.008



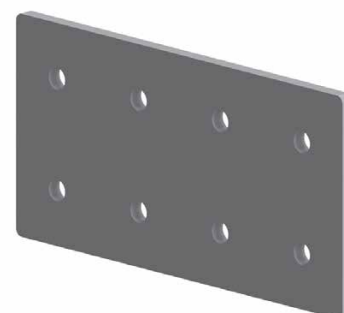
ALS.084.307.006



ALS.084.310.004

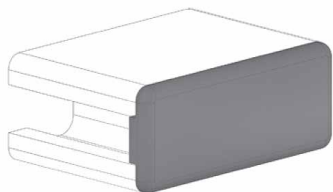


ALS.084.310.015



ALS.084.710.011

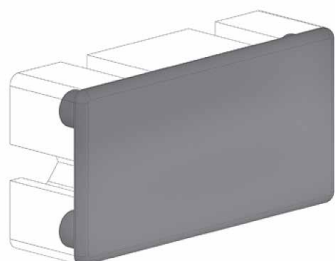
## End Caps and Plugs



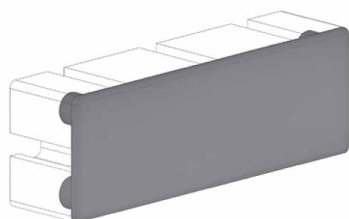
ALS.084.201.004



ALS.084.201.024



ALS.084.201.025



ALS.084.201.020



ALS.084.202.002

Code	Description	Comment	g
ALS.084.201.003	18x32	Black or Grey	2
ALS.084.201.004	18.5x45	Black or Grey	2
ALS.084.201.007	30x30- slot 6	Black or Grey	10
ALS.084.201.008	30x60- slot 6	Black or Grey	7
ALS.084.201.012	45x45	Black or Grey	7
ALS.084.201.018	45x60	Black or Grey	9
ALS.084.201.019	45x90	Black or Grey	12
ALS.084.201.022	45x180	Black or Grey	23
ALS.084.201.023	90x90	Black or Grey	22
ALS.084.201.024	40x40	Black or Grey	3
ALS.084.201.025	40x80	Black or Grey	10
ALS.084.201.026	80x80	Black or Grey	18
ALS.084.201.041	30x30- slot 8	Black or Grey	3
ALS.084.201.042	30x60- slot 8	Black or Grey	6
ALS.084.201.043	40x120	Black or Grey	15
ALS.084.201.057	60x60- slot 8	Black or Grey	12
ALS.084.201.061	20x20	Black or Grey	2
ALS.084.201.062	20x40	Black or Grey	3
ALS.084.201.062	Plastic plug Ø8	Grey	1
ALS.084.201.062	Plastic plug Ø13	Grey	1

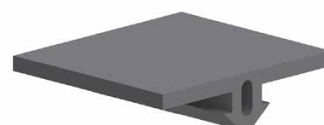
- Material: Polyamide
- End caps are available for all profiles we sell locally.
- The Table above and the Images to the right are examples of just some of the End Caps and Plugs in the range. Please see our website for full details.
- Images are a guide only. Actual products may vary. Not to scale.

## Cover strip and Panel infill

Code	Description	Material	g
ALS.084.203.002	Rigid Cover Strip. Black. 8mm slot	Rigid PVC	176
ALS.084.203.003	Rigid Cover Strip. Grey. 8mm slot	Rigid PVC	176
ALS.084.203.004	Rigid Cover Strip. Grey. 6mm slot	Rigid PVC	69
ALS.084.203.004N	Rigid Cover Strip. Black. 6mm slot	Rigid PVC	69
ALS.084.203.007	Light Rigid Cover Strip. Grey. 8mm slot	Rigid PVC	202
ALS.084.205.001	Rubber profile insert strip- 8mm slot	Soft Rubber	228
ALS.084.512.001	Black Rubber panel infill – 4mm	Thermoplastic rubber	50
ALS.084.512.056	Black Rubber panel infill – 5mm	Thermoplastic rubber	34



ALS.084.203.004



ALS.084.205.001



ALS.084.512.001

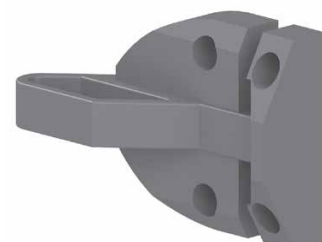
- Images are a guide only. Actual products may vary. Not to scale.

## Handles, Locks and Catches

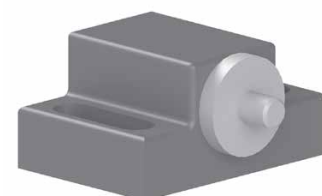
Code	Description	Material	g
ALS.084.504.001	Bridge handle 107x36	Black polyamide	19
ALS.084.504.002	Bridge handle 129x45	Black polyamide	34
ALS.084.517.001	Door lock – manual	Black polyamide	34
ALS.084.518.002	Spring lock – large	Black polyamide	33
ALS.084.519.002	Door stop catch	Brass	39
ALS.084.522.001	Door stop - large	Grey polyamide	27
ALS.084.522.002	Door stop - small	Grey polyamide	11
ALS.084.525.001	Magnetic door catch	Fibreglass reinforced nylon	37



ALS.084.504.001



ALS.084.518.002



ALS.084.525.001

- Images are a guide only. Actual products may vary. Not to scale.

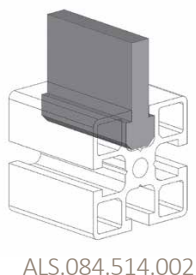
## Hinges



Code	Description	Material	g
ALS.084.500.001	Hinge 80x44	Aluminium	71
ALS.084.500.003	Hinge 80x80	Aluminium	99
ALS.084.500.006	Comb hinge 80x100	Aluminium	180
ALS.084.501.001	Hinge M4x20	Black polyamide	14
ALS.084.501.008	Hinge M5x20	Black polyamide	32
ALS.084.501.009	Hinge M6x20	Black polyamide	40
ALS.084.501.010	Hinge M8x20	Black polyamide	39
ALS.084.501.011	Hinge M4x8	Black polyamide	13
ALS.084.503.001	Hinge M5x20	Aluminium	49

- Other Hinges are available. Please see our web shop.
- Images are a guide only. Actual products may vary. Not to scale.

## Panel accessories



Code	Note	Material	g
ALS.084.407.001	Rapid panel anchors	Aluminium	47
ALS.084.407.003	Quick release safety panel kit	Grey polyamide	331
ALS.084.507.001	Adjustable fixing block	Aluminium	10
ALS.084.510.006	Fixing block – 40 Series	Grey polyamide	10
ALS.084.510.007	Fixing block – 45 Series	Grey polyamide	10
ALS.084.508.001	Quick fixing block	Grey polyamide	7
ALS.084.509.003	Glass panel stop	Die-cast zinc	74
ALS.084.514.002	Multi use profile – slot 8	Black rubber	718
ALS.084.532.001	Sliding Door Rubber 18.5x32	Black polyamide	11

- Other Panel accessories are available. Please see our web shop.
- Images are a guide only. Actual products may vary. Not to scale.

Code	Description	Material	g
ALS.084.408.002	Fixed Foot – M8	Aluminium, EPDM and stainless steel	130
ALS.084.409.002	Floor anchor base 45×45	Aluminium	562
ALS.084.409.003	Floor anchor base 45×90	Aluminium	672
ALS.084.409.004	Floor anchor base 40×40	Aluminium	661
ALS.084.409.005	Floor anchor base 40×80	Aluminium	800
ALS.084.409.006	Floor anchor bracket- slot 6	Steel	173
ALS.084.409.007	Floor anchor bracket- slot 8	Steel	242
ALS.084.409.011	Floor anchor bracket 90×90	Aluminium	2300
ALS.084.410.003	Floor anchor base 90×90	Painted Steel	2364
ALS.084.410.006	Floor anchor base 80×80	Painted Steel	2360
ALS.084.207.003	Base Cap – 40×40 and 45×45	Grey polyamide	100
ALS.084.207.004	Base Cap 45×45	Grey polyamide	20

- Other anchoring accessories may be available. Please see our web shop.
- Images are a guide only. Actual products may vary. Not to scale.

## Anchor brackets



ALS.084.408.002



ALS.084.409.006



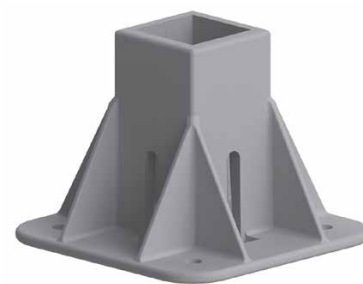
ALS.084.409.007



ALS.084.409.011



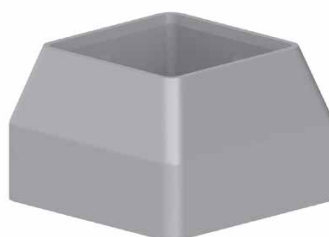
ALS.084.409.002



ALS.084.409.004



ALS.084.410.006



ALS.084.207.004



ALS.084.409.005



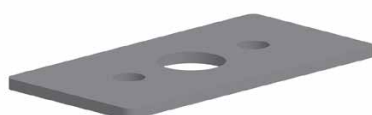
## Feet and accessories



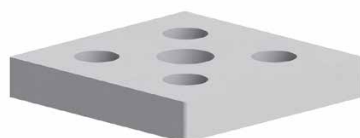
ALS.084.401.001



ALS.084.402.001



ALS.084.536.001



ALS.084.405.002



ALS.084.406.001



ALS.084.405.005

Code	Description	Material	g
ALS.084.401.001	Articulated anti-vibration feet – M8-40	Black polyamide & gal. steel	29
ALS.084.401.002	Articulated anti-vibration feet – M8-50	Black polyamide & gal. steel	39
ALS.084.401.004	Articulated anti-vibration feet – M6-40	Black polyamide & gal. steel	26
ALS.084.402.001	Articulated fixing feet – M8-80	Black polyamide & gal. steel	53
ALS.084.402.004	Articulated fixing feet – M16-80	Black polyamide & gal. steel	141
ALS.084.403.003	Anti-vibration damping pad Ø 80	Black synthetic anti-oil rubber	36
ALS.084.405.001	Clamping flange 45x90 M16	Aluminium	83
ALS.084.405.002	Clamping flange 90x90 M16	Aluminium	303
ALS.084.405.004	Clamping flange 45x90 – 1/4"	Aluminium	120
ALS.084.405.005	Clamping flange 40x80 – M16	Aluminium	80
ALS.084.405.015	Clamping flange 45x90 – 1/2"	Aluminium	110
ALS.084.405.016	Clamping flange 45x90 – Closed	Aluminium	100
ALS.084.536.001	Sealing plate for 45x90 flanges	EPDM	12
ALS.084.406.001	Stiffener for corner joints and connecting M16 articulated feet	Aluminium	720

- It is recommended to attach the Feet to the profile using a Clamping Flange.
- Nuts and bolts to attach the clamping flanges are not included.
- Images to the right are examples of some of the Feet and associated accessories that are in the range. Please see our website for full details.
- Images are a guide only. Actual products may vary. Not to scale.

## Castor wheels

Code	Description	Material	g
ALS.084.404.001	Castor wheel – Ø60	Chromium steel with rubber wheels	228
ALS.084.404.002	Castor wheel – Ø100	Chromium steel with rubber wheels	427
ALS.084.404.003	Braked castor wheel – Ø60	Chromium steel with rubber wheels	330
ALS.084.404.005	Braked castor wheel – Ø125	Stainless steel bolt, rubber wheel. Aluminium frame	1500
ALS.084.404.006	Castor wheel – Ø60	Chromium steel with rubber wheels	330
ALS.084.404.008	Braked castor wheel – Ø60	Chromium steel with rubber wheels	400

- Castor wheels may be attached to the profile using a clamping flange.
- Images are a guide only. Actual products may vary. Not to scale.



ALS.084.404.001



ALS.084.404.002



ALS.084.404.006



ALS.084.404.008



ALS.084.404.003



ALS.084.404.005

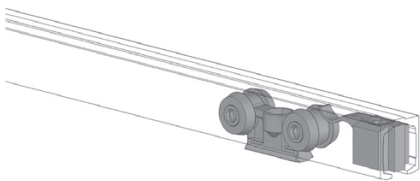
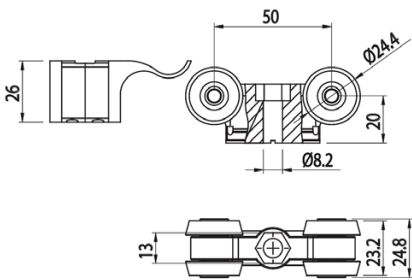
# Linear Automation Systems



Linear Guides

Code	Description	Material	Comment	g
ALS.084.535.001	Sliding Trolley	Black polyamide	Includes end stop	65
ALS.084.101.039	30x33 Guide Profile for Trolley	Anodised aluminium	Sold per metre	610
ALS.084.101.004	18.5x45 Profile	Anodised aluminium	Details on page 26	1150
ALS.084.535.002	Linear Guide Clamping Angle	Aluminium	8mm slot profiles	40
ALS.084.301.035	M15x16 Bolt	Galvanised steel	Details on page 55	3

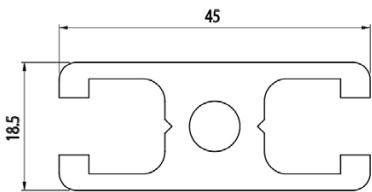
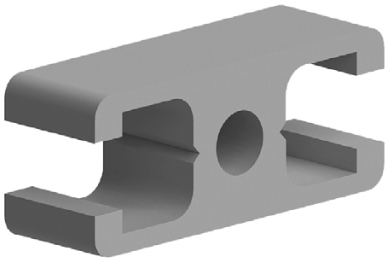
- Other sizes available on special order.
- Images are a guide only. Actual products may vary. Not to scale.



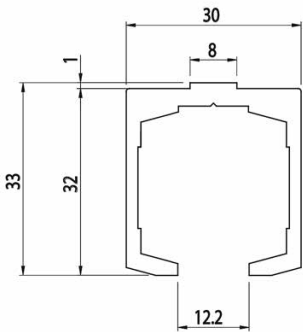
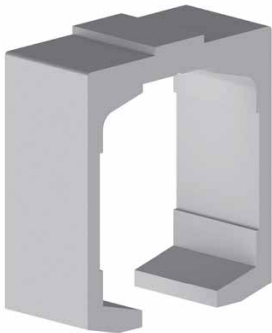
ALS.084.535.001



ALS.084.535.002



ALS.084.101.004

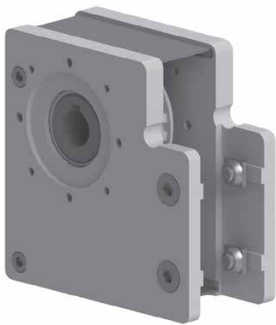


ALS.084.101.039



ALS.084.301.035

Drive Heads, Idler Heads and Trolleys



ALS.800.040.201



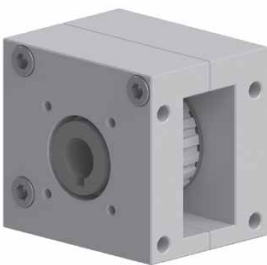
ALS.800.040.202



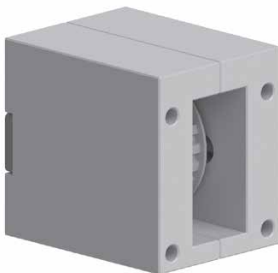
ALS.800.040.203



ALS.800.040.410



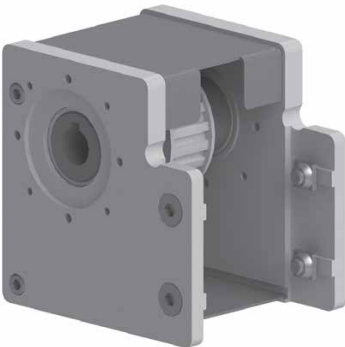
ALS.800.040.501



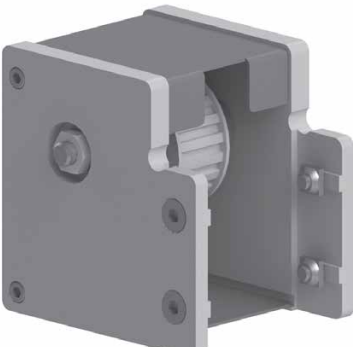
ALS.800.040.502



ALS.800.040.503



ALS.800.040.301



ALS.800.040.302



ALS.800.040.303

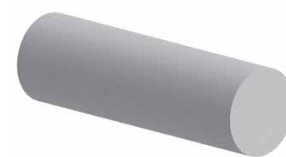
Code	Description	Comment	g
ALS.800.040.201	45x90 Drive Head	Use with AT10-16mm belt	1461
ALS.800.040.202	45x90 Idler Head	Use with AT10-16mm belt	1482
ALS.800.040.203	45x90 Horizontal Sliding Trolley	Use with AT10-16mm belt	1281
ALS.800.040.410	45x90 Vertical Sliding Trolley	Use with AT10-16mm belt	2721
ALS.800.040.501	55x55 Drive Head	Use with T5-16mm belt	708
ALS.800.040.502	55x55 Idler Head	Use with T5-16mm belt	596
ALS.800.040.503	55x55 Sliding Trolley	Use with T5-16mm belt	600
ALS.800.040.301	90x90 Drive Head	Use with AT10-25 mm belt	1975
ALS.800.040.302	90x90 Idler Head	Use with AT10-25 mm belt	1995
ALS.800.040.303	90x90 Sliding Trolley	Use with AT10-25 mm belt	1614

- Full specifications available at our web shop
- Other sizes available on special order
- Images are a guide only. Actual products may vary. Not to scale.

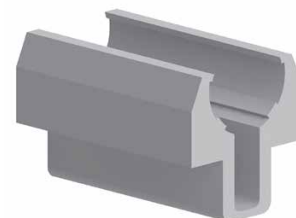
## Bar, Belts, Flanges and Drive Pins

Code	Description	Comment	g
ALS.800.040.018	Ø12mm Round Bar for Guides	For 45x90 and 90x90 guides	890
ALS.800.040.023	Ø6 mm Round Bar for Guides	For 55x55 guides	300
ALS.084.529.001	Support Profile for Guides	For 45x90 and 90x90 guides	600
ALS.800.040.021	Support Profile for Guides	For 55x55 guides	2330
ALS.084.101.019	45x90 Profile	Details on page 32	3000
ALS.084.101.004	18.5x45 Profile	Details on page 26	1150
ALS.800.040.016	Timing Belt AT10- 16mm	For 45x90 guides	100
ALS.800.040.017	Timing Belt AT10-25- 25mm	For 45x90 and 90x90 guides	150
ALS.800.040.056	Timing Belt T5-16- 16mm	For 55x55 guides	50
ALS.800.040.015	Drive Pin – MVF30F	For 45x90 and 90x90 guides	315
ALS.800.040.019	Drive Pin – MVF44F	For 45x90 and 90x90 guides	338
ALS.800.040.060	Drive Pin MVF30F-55	For 55x55 guides	220
ALS.800.040.014	Adapter flange for MVF30F	For 45x90 and 90x90 guides	156
ALS.800.040.020	Adapter flange MVF44F	For 45x90 and 90x90 guides	338
ALS.084.529.003	Wheel for sliding guides – 35	Use with round bar Ø12mm	69
ALS.084.529.004	Eccentric pin	Use with guide wheels Ø12	40
ALS.084.529.005	Concentric pin	Use with guide wheels Ø12	38
ALS.084.529.008	End Stop Blocks	Use with Ø12mm round bar	19

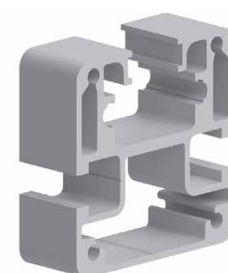
- Full specifications available at our web shop
- Other sizes available on special order
- Images are a guide only. Actual products may vary. Not to scale.



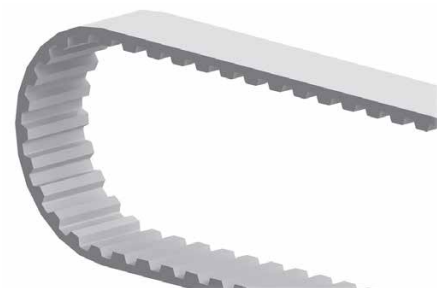
ALS.800.040.023



ALS.800.529.001



ALS.800.040.021



ALS.800.040.056



ALS.800.040.015

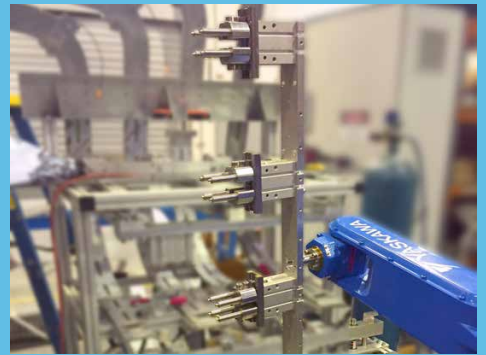


ALS.800.040.014



## Application examples

---









- T-slot profile and accessories
- Linear automation
- Conveyors
- Robotic end effectors
- Automation solutions
- Workstations
- Machine guarding
- Machine frames
- Manufacturing jigs and frames
- Exhibition and retail displays
- Lightboxes and AV systems

## PROFILUM

### **SYDNEY - MAIN WAREHOUSE**

+61 2 9707 5800  
sales@aluminiumprofile.com.au  
25 Harley Cres, Condell Park,  
NSW 2200 AUSTRALIA

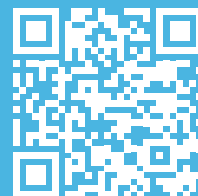
### **BRISBANE**

+61 7 3375 7555  
profile@precisionstainless.com.au  
16 West Link Pl, Richlands,  
QLD 4077 AUSTRALIA

### **VICTORIA and SOUTH AUSTRALIA**

+61 3 9738 2388  
profilum@eljay.com.au  
2/19 Edelmaier St, Bayswater  
VIC 3153 AUSTRALIA

© PROFILUM 2022



**Order online at  
our web shop**

**aluminiumprofile.com.au**  
**australis-group.com**